



AN ASIAN COLLECTION OF
JADE CARVINGS

清疎致趣
不知書齋收藏玉器精品

HONG KONG 30 NOVEMBER 2017
香港 2017年11月30日

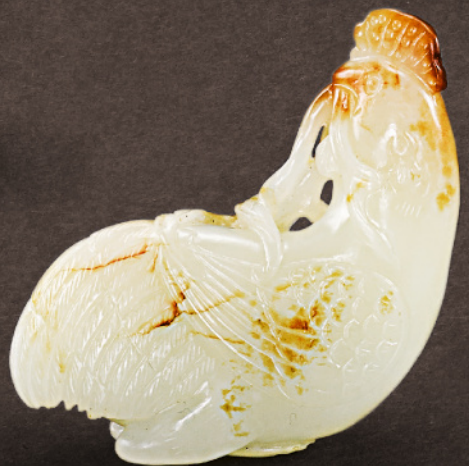
FRONT COVER
LOT 14
THIS PAGE
LOT 5

AN ASIAN COLLECTION OF JADE CARVINGS

清疎致趣

不知書齋收藏玉器精品


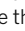






IMPORTANT NOTICE TO BUYERS

PRE-REGISTRATION

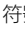
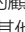
Clients who wish to bid on lots marked  in the printed catalogue and  in the eCatalogue ("Premium Lots") may be requested by Sotheby's to complete the pre-registration application form and to deliver to Sotheby's a deposit of **HK\$5,000,000** or such other higher amount as may be determined by Sotheby's (for any items of Chinese Works of Art, Fine Chinese Paintings, Fine Classical Chinese Paintings, Magnificent Jewels & Jadeite and Modern & Contemporary Art – Evening Sale) and of **HK\$2,000,000** or such other higher amount as may be determined by Sotheby's (for any items in other categories), and any financial references, guarantees and/or such other security as Sotheby's may require in its absolute discretion as security for the bid. If all lots in the catalogue are "Premium Lots", a Special Notice will be included to this effect and this symbol will not be used. The BID^{www} online bidding service is not available for Premium Lots.

For any lots other than Premium Lots, regardless of the low pre-sale estimate for the lot, Sotheby's reserves the right to request from prospective bidders to complete the pre-registration application form and to deliver to Sotheby's a deposit of **HK\$1,000,000** or such higher amount as may be determined by Sotheby's (for any items of Chinese Works of Art, Fine Chinese Paintings, Fine Classical Chinese Paintings, Magnificent Jewels & Jadeite and Modern & Contemporary Art – Evening Sale) and of **HK\$500,000** or such other higher amount as may be determined by Sotheby's (for any items in other categories) and any financial references, guarantees and/or such other security as Sotheby's may require in its absolute discretion, as security for the bid.

Sotheby's reserves the right to request at any time any additional deposit, guarantee and/or such other security as Sotheby's may determine from any bidder whose total bidding (hammer price plus buyer's premium) has reached or exceeded ten times the amount of that bidder's deposit.

給予買家的重要告示

預先登記

蘇富比可要求有意競投在目錄內標有  符號或電子目錄內標有  符號拍賣品（“高估價拍賣品”）的顧客填寫預先登記申請表及交付蘇富比**港幣5,000,000元**或其他由蘇富比決定之更大金額的訂金（此適用於任何中國藝術品，中國書畫，中國古代書畫，瑰麗珠寶與翡翠首飾及現當代藝術晚間拍賣）及交付**港幣2,000,000元**或其他由蘇富比決定之更大金額的訂金（此適用於任何其他類別之拍賣品）及任何財務狀況證明，擔保或/及其他由蘇富比全權酌情決定要求的抵押作為參加蘇富比競投的保障。若在同一目錄中所有拍賣品均為高估價拍賣品，則會就此作出特別通知而不會使用此符號。網上競投服務並不適用於高估價拍賣品。

除高估價拍賣品外之其他拍賣品，不論拍賣品估計之預售低價為何，蘇富比有權要求準競投人填寫預先登記申請表及交付蘇富比**港幣1,000,000元**或其他由蘇富比決定之更大金額的訂金（此適用於任何中國藝術品，中國書畫，中國古代書畫，瑰麗珠寶與翡翠首飾及現當代藝術晚間拍賣）及交付**港幣500,000元**或其他由蘇富比決定之更大金額的訂金（此適用於任何其他類別之拍賣品）及任何財務狀況證明，擔保或/及其他由蘇富比全權酌情決定要求的抵押作為參加蘇富比競投的保障。

蘇富比有權於任何時候向任何競投總和（成交價加買家支付之酬金）達到或超越競投人訂金10倍的競投人要求任何額外訂金，擔保及/或其他由蘇富比決定之其他保障。額外訂金，擔

The amount of the additional deposit, guarantee and/or other security shall be determined by Sotheby's at its sole discretion and Sotheby's reserves the right to reject any further bidding from that bidder until such additional deposit, guarantee and/or other security has been delivered to Sotheby's.

Sotheby's has no obligation to accept any pre-registration application. Sotheby's decision in this regard shall be final.

Clients are requested to contact Sotheby's **at least 3 working days** prior to the relevant sale in order to allow Sotheby's to process the pre-registration, and to bear in mind that Sotheby's is unable to obtain financial references over weekends or public holidays. Any required deposits shall be paid in Hong Kong dollars by way of wire transfer or debit/credit card (clients must present their cards in person to Sotheby's).

If a client is not successful on any lot, Sotheby's will arrange for a refund (subject to any right of set off) of the deposit amount paid by such client without interest within 14 working days of the date of the sale. Any exchange losses or fees associated with the refund shall be borne by the client.

Clients may not be allowed to register and bid on a lot if Sotheby's fails to receive a completed pre-registration application form or any financial references, guarantees, deposits or other security as requested by Sotheby's or if the pre-registration application is not accepted by Sotheby's.

COLLECTION AND STORAGE

Storage charge will be incurred for uncollected items from this sale one month after the date of the auction at HK\$1,200 per lot per month. Please refer to 'Guide for Prospective Buyers' for details.

保及/或其他保障的金額由蘇富比全權酌情決定。而蘇富比有權拒絕任何該競投人之其他競投直至該額外訂金，擔保及/或其他保障已交付予蘇富比。

蘇富比並無責任接受任何預先登記申請。蘇富比對此有最終的決定權。

顧客須於有關的拍賣日前**不少於3個工作天**聯絡蘇富比進行預先登記。顧客必須緊記蘇富比無法於假日或週末取得財務狀況證明。任何所需訂金必須以電匯或借記卡/信用卡以港幣付款（顧客必須親身交付蘇富比其借記卡/信用卡）。

如顧客未能投得任何拍賣品，蘇富比將安排於有關出售日後十四個工作天內退回該顧客已付的訂金（不包含利息）。蘇富比可用訂金抵銷該顧客的任何欠款。任何涉及退款的兌換交易損失或費用，將由顧客承擔。

如蘇富比未能收到顧客填妥的預先登記申請表，或蘇富比要求的任何財務狀況證明，擔保，訂金或其他的抵押，或蘇富比不接受顧客提交的預先登記申請表，該等顧客可能不獲登記及不得競投拍賣品。

收取及儲存貨品

由拍賣後一個月起，閣下須為是次未獲領取的拍賣品支付儲存費，每件每月港幣1,200元。詳情請參考‘給準買家之指引’。

AN ASIAN COLLECTION OF JADE CARVINGS

清瑣致趣 不知書齋收藏玉器精品

AUCTION IN HONG KONG
30 NOVEMBER 2017
SALE HK0775
10 AM

香港拍賣
2017年11月30日
拍賣會編號HK0775
早上10時

HONG KONG PREVIEW

Friday 24 Nov
10am - 6pm

Saturday 25 Nov
10am - 6pm

Sunday 26 Nov
10am - 6pm

Monday 27 Nov
10am - 7pm

Tuesday 28 Nov
10am - 7pm

Wednesday 29 Nov
10am - 7pm

5th Floor
One Pacific Place
88 Queensway, Hong Kong

香港預展

星期五 11月24日
上午10時至下午6時

星期六 11月25日
上午10時至下午6時

星期日 11月26日
上午10時至下午6時

星期一 11月27日
上午10時至下午7時

星期二 11月28日
上午10時至下午7時

星期三 11月29日
上午10時至下午7時

香港金鐘道八十八號
太古廣場一座五樓



SPECIALISTS AND AUCTION ENQUIRIES

For further information on lots in this auction please contact any of the specialists listed below.



Nicolas Chow
*Worldwide Head and
Chairman
Deputy Chairman Asia*



Sam Shum
Director



Christian Bouvet
Director



Amethyst Chau
Deputy Director



Vivian Tong
Deputy Director



Cristine Li
Junior Specialist



Carmen Li
Business Manager



Rachel Wong
Administrator



Rubie Fong
*Department Assistant
Trainee Cataloguer*



Mizuka Seya
Deputy Director



Peter Song
Deputy Director



Ching Yi Huang
Deputy Director

SALE NUMBER
HK0775 "LINGXIAO"

SPECIALISTS IN CHARGE

Nicolas Chow
nicolas.chow@sothebys.com
Sam Shum
sam.shum@sothebys.com
Julian King
julian.king@sothebys.com
Carrie Li
carrie.li@sothebys.com
Christian Bouvet
christian.bouvet@sothebys.com
Amethyst Chau
amethyst.chau@sothebys.com
Vivian Tong
vivian.tong@sothebys.com
Cristine Li
cristine.li@sothebys.com
+852 2822 8128
FAX +852 2521 5421

BUSINESS MANAGER

Carmen Li
+852 2822 8124
FAX +852 2521 5421

INTERNATIONAL RESEARCH

Regina Krahl
Jungeun Lee
Isabella Tedeschi

SALE ADMINISTRATOR

Rachel Wong
+852 2822 5523

PRIVATE CLIENT GROUP

Asia
Jessica Lee (Hong Kong)
+852 2822 5539
Europe
Shu Zheng (London)
+44 207 293 5958
North America
Yin Zhao (New York)
+1 212 894 1685

CLIENT SERVICES

For assistance in buying
at this auction
+852 2822 8142
FAX +852 2522 1063

PAYMENT

Client Accounting
Sally Lai
+852 2822 5533
FAX +852 2501 4266
hkpostsaleservices@sothebys.com

SHIPPING

Phoebe Yeung
+852 2822 5507
fax +852 2523 6489
hkgshipping@sothebys.com

INTERNATIONAL TEAM



Nicolas Chow
*Worldwide Head and
Chairman
Deputy Chairman Asia*



Henry Howard-Sneyd
*Chairman of Asian Arts,
Americas and Europe*



Mee-Seen Loong
*Vice Chairman,
Chinese Art*



Ryoichi Hirano
*Senior International
Specialist, Director*



Julian King
*International
Specialist, Director*



Carrie Li
*Senior Specialist
Greater China,
Director*



Dr. Caroline Schulten
*Senior Specialist
Europe
Senior Director*

ABSENTEE AND TELEPHONE BIDS

+852 2522 8142
fax +852 2522 1063
bids.hongkong@sothebys.com

Telephone bid requests should be
received 24 hours prior to the sale.
This service is offered for lots
with a minimum low estimate of
HK\$40,000

SUBSCRIPTIONS

+852 2822 8142
FAX +852 2810 6238

CATALOGUE PRICE

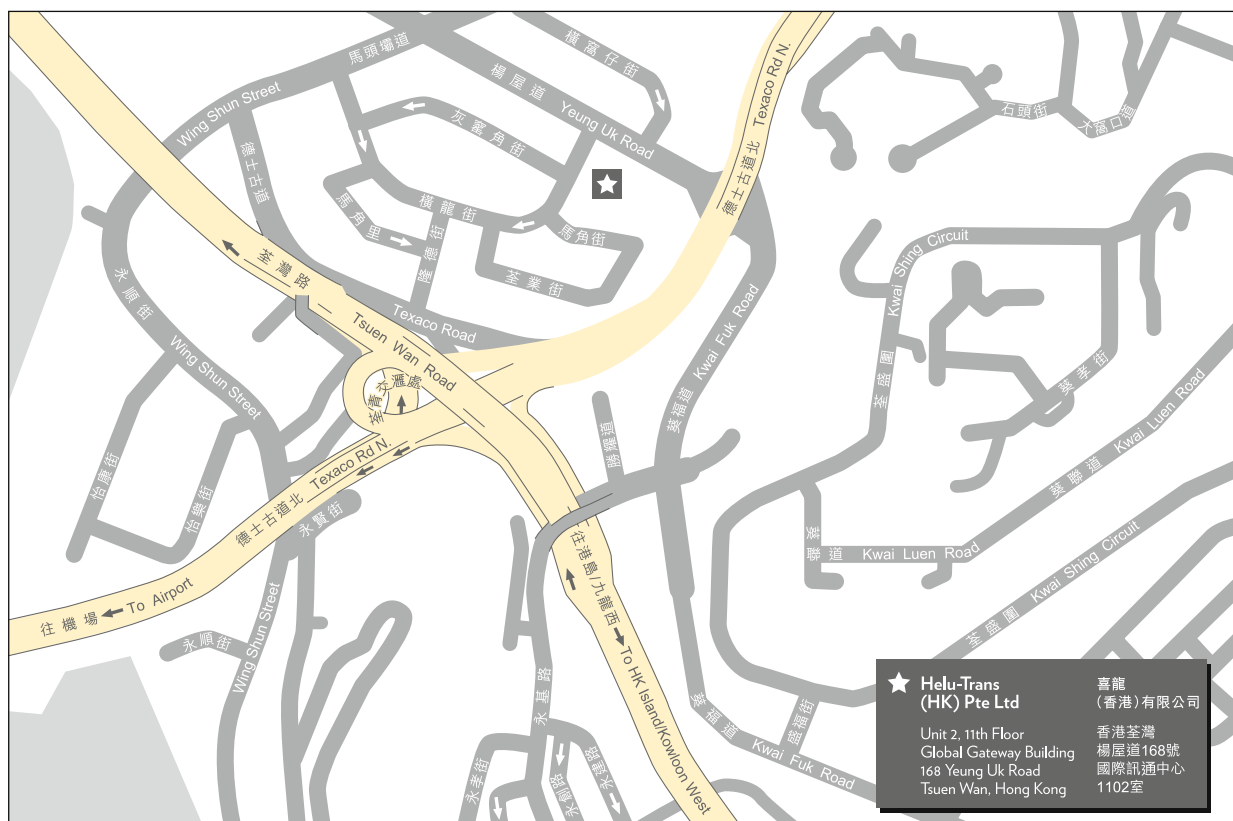
HK\$500 at the gallery

AUCTION AND EXHIBITION INFORMATION

+852 2524 8121



COLLECTION AND STORAGE 收取及儲存貨品



All items from this auction not collected from 5/F One Pacific Place by Wednesday 10 January 2018 6pm will be transferred to Helu-Trans (HK) Pte Ltd where they can be collected from Monday 15 January 2018 onwards. All items not collected within one month after the date of the auction will incur storage charge at the following rate:

Storage charge - HK\$1,200 per lot per month.

To arrange shipping or collection, please contact:

Sale Administrator / Shipping Administrator

As printed in front of this catalogue

or

Helu-Trans (HK) Pte Ltd

Unit 2, 11th Floor, Global Gateway Building, 168 Yeung Uk Road

Tsuen Wan, Hong Kong

Contact: Ms. Kelly Fung

Tel: 2612 2711

Fax: 2612 2815

Office Hours:

Monday to Friday 9am – 5pm

Saturday 9am – 12pm

Lots will be released to you or your authorised representative when full and final payment has been received by Sotheby's, appropriate photographic identification has been made, and a release note has been provided by Sotheby's (open Monday to Friday 9:30am - 6pm).

Buyers are reminded that Sotheby's accepts liability for Loss or Damage for a maximum of thirty (30) calendar days after the date of the auction. Removal, interest, storage, insurance and handling charges will be levied on uncollected lots. Please refer to Condition 7 of the Condition of Business for Buyers printed in this catalogue.

是次拍賣之所有拍品如未能於2018年1月10日下午6時前（星期三）在太古廣場1期5樓提取，將會移存至喜龍（香港）有限公司。閣下可於2018年1月15日（星期一）開始提貨，拍賣後一個月若閣下尚未領取拍品，屆時須支付移存拍品之儲存費。儲存費計算方法如下：

儲存費：每件每月港幣1,200元。

如欲安排付運或收取貨品，請聯絡：

行政助理 / 運輸助理

列印於此圖錄之前部份

或

喜龍（香港）有限公司

香港荃灣楊屋道168號國際訊通中心1102室

聯絡：馮嘉嘉

電話：2612 2711

傳真：2612 2815

辦公時間：


星期一至星期五 上午9時 - 下午5時

星期六 上午9時 - 下午12時

蘇富比收到全數結清之貨款、附有相片之身份證明文件，及蘇富比提供之領貨單，會將拍賣品交付予閣下或閣下所授權之代表。（辦公時間為星期一至五上午9時30分至下午6時）

買家應注意，蘇富比對拍賣品損失或損壞之責任期限最多至拍賣後三十（30）天。未獲領取之拍賣品將被徵收搬運費、利息、儲存費、保險費及手續費。請參閱載於本圖錄之買家業務規則第7條。





CONTENTS

4	IMPORTANT NOTICES TO BUYERS
5	AUCTION INFORMATION
7	SPECIALISTS AND AUCTION ENQUIRIES
9	COLLECTION AND STORAGE INFORMATION
12	AN ASIAN COLLECTION OF JADE CARVINGS LOTS 1 - 98
84	ASIA SPECIALIST DEPARTMENTS
86	CHRONOLOGY
87	IMPORTANT NOTICE
87	GUIDE FOR PROSPECTIVE BUYERS
90	TAX INFORMATION FOR BUYERS
90	CONDITIONS OF BUSINESS FOR BUYERS
93	GUIDE FOR ABSENTEE BIDDERS
95	ABSENTEE BID FORM
97	PRE-REGISTRATION APPLICATION FORM
100	CLIENT SERVICES

**A PALE CELADON JADE CARVING OF A
TRUMPET VINE
SONG DYNASTY**

sensuously modelled as a half-opened trumpet flower borne on curved leafy stems, the five petals finely incised with veins, elegantly furled at the edges revealing long stamens, the stone of a pale celadon tone flecked with russet
6.7 cm, 2⁵/₈ in.

HK\$ 50,000-70,000

US\$ 6,500-9,000

宋 青白玉雕凌霄花

Sensitively modelled in openwork as a elegant spray of trumpet vine, the present carving exemplifies the craftsman's masterful skill in transforming a raw jade pebble into the soft naturalistic forms of a trumpet vine.

The present piece belongs to a group of delicately carved jade ornaments inspired from natural forms, introduced in the Song dynasty. The reverse of the flower was cleverly undercut to create a gap between the flower and one of its leaves, creating a hollowed slot through which a strap or a belt could pass, suggesting the present piece may have been used as a belt slide. Jade belt slides such as the present piece served as replacements for earlier metal or jade buckles which were heavier and more ungainly to use.

A closely related trumpet vine plaque attributed to the Song dynasty is illustrated in *Compendium of Collections in the Palace Museum. Jade*, vol. 5, *Tang, Song, Liao, Jin and Yuan Dynasties*, Beijing, 2011, pl. 196. The rendering of the floral spray, with the bloom wrapped amongst long leaves with naturally furled edges, closely resembles that on the present piece. Compare another example also rendered as a floral spray, from the Hei-Chi collection and attributed to the Song dynasty, published in Tao and Liu Yunhui, *Jades from the Hei-Chi Collection*, Beijing, 2006, p.160. Another jade ornament worked in the form of a morning glory spray, from the collection of the Palace Museum, Beijing, is illustrated in *Zhongguo yuqi quanji*, vol. 5, Beijing, 1998, pl. 88. See also another example of the same subject as the present piece but as a round ornament, published *ibid*, pl. 89. A later example from the collection of Sir Joseph Hotung, dated to the Ming dynasty, is also discussed in Jessica Rawson, *Chinese Jade from the Neolithic to the Qing*, London, 1995, p. 340, pl. 25:20.



2

A BROWN AND BLACK JADE
'PARROT' GROUP
MING DYNASTY

sensuously worked as a parrot perched on a leafy branch issuing large peaches, the bird with the head lowered pecking the succulent fruit, its wings finely incised with plumage, the stone of a creamy brown tone with black inclusions
3.5 cm, 1 $\frac{3}{8}$ in.

HK\$ 20,000-30,000
US\$ 2,600-3,850

明 玉雕鸚鵡壽桃



2

3

A CELADON AND BLACK JADE
'DRAGON' GROUP
YUAN DYNASTY OR EARLIER

depicted in openwork with a three-clawed dragon writhing amongst cragged rocks and scrolling clouds, pierced vertically atop with a rectangular aperture for attachment, the stone of a greyish celadon tone suffused with black inclusions
5.1 cm, 2 in.

HK\$ 40,000-60,000
US\$ 5,200-7,700

元或更早 墨青玉鏤雕雲龍



3

A CELADON AND BROWN JADE
FIGURE OF A BOY
SONG – MING DYNASTY

the pebble worked in the form of a boy standing with his legs crossed, his left hand raised clutching a *ruyi* sceptre and a musical chime, his right arm raised holding a stick about to strike the chime, the stone of a brownish celadon tone with dark brown inclusions
6.5 cm, 2½ in.

PROVENANCE

C.C. Teng & Co., Taipei, 1994.

HK\$ 60,000-80,000

US\$ 7,700-10,300

宋至明 褐斑青玉吉慶童子

來源：

慎德堂，台北，1994年



A BROWN AND CELADON JADE FIGURE OF A BUFFALO SONG DYNASTY

modelled recumbent with the tail curled alongside its rear haunches, its head soaring upwards and further detailed with a pair of striated horns, almond-shaped eyes and funnel-shaped ears, pierced with a circular aperture just below the neck, the stone of a greyish celadon tone with patches of brown
4 cm, 1 $\frac{5}{8}$ in.

HK\$ 100,000-150,000
US\$ 12,900-19,300

The reclining buffalo, symbol of strength as well as tranquility, is a classic icon. Its bucolic aspect evokes the simple and true life in the countryside, and as the reputed mount of the philosopher Laozi, the buffalo also has strong Daoist connotations.

The current jade buffalo is finely worked from a pebble of celadon colour, suffused with patches of darker brown which have been skilfully incorporated to denote the natural colour of the animal. Pierced through the back, it would have been treasured by its owner and worn as an accessory.

宋 青白玉帶皮臥牛

臥牛在中國繪畫裏代表寧靜致遠、柔能克剛，歌詠田園生活的悠然自得。同時，水牛作為老子的座騎，隱喻著道家的哲學思維。

本品青玉瑩潤，保留褐皮，刻畫傳神，栩栩如生。其背部小洞可供繫戴，隨身把玩，難能可貴。



A CELADON AND RUSSET JADE FIGURE OF
A BOY
SONG – YUAN DYNASTY

reclining with his legs crossed and one arm resting on a drum,
the face with a cheerful expression below three tufts of hair,
the stone of a pale celadon tone
4.4 cm, 1¾ in.

HK\$ 20,000-30,000
US\$ 2,600-3,850

宋至元 青白玉童子臥鼓



6

A GREY AND WHITE JADE FIGURE OF A BOY
MING DYNASTY

standing with one arm raised and carrying a leafy spray of
flowering lotus behind his back, the stone of an opaque white
tone with light grey veins
5 cm, 2 in.

HK\$ 15,000-25,000
US\$ 1,950-3,250

明 灰白玉童子



7

A PALE CELADON JADE FIGURE OF A BOY SONG – YUAN DYNASTY

standing with his legs crossed and carrying a curved leafy stem over the shoulder, his head turned to his right with hair gathered into three top knots, the stone of a pale celadon tone
5.7 cm, 2¼ in.

HK\$ 30,000-40,000
US\$ 3,850-5,200

宋至元 青白玉持穗童子



8

A CELADON AND RUSSET JADE FIGURE OF A BOY MING DYNASTY OR EARLIER

portrayed lying on his front with his head resting sideways on the ball enclosed within his arms, the partially tonsured head depicted with a tuft of hair, the figure further rendered clad in loose robes and trousers, the stone of a celadon colour with faint russet patches
6.7 cm, 2⅝ in.

HK\$ 20,000-30,000
US\$ 2,600-3,850

明或更早 青白玉戲球童子



9

**A CELADON AND BROWN JADE FIGURE OF A
BOY ON HOBBY HORSE
MING DYNASTY**

depicted riding on a hobby horse with his left hand grasping the reins, his right arm raised holding a large lotus leaf, the hair gathered into two topknots, the stone of a golden beige tone with darker patches
8.2 cm, 3¼ in.

HK\$ 50,000-70,000
US\$ 6,500-9,000

明 褐斑青玉雕騎馬童子

Images of boys playing with a hobby horse comprise part of the popular 'boys at play' and 'Hundred Boys' subjects that emerged from the Song dynasty. This theme is symbolic of the Confucian ideal for the education and advancement of many sons, a wish further emphasised by the lotus he carries which represents 'May you continuously give birth to distinguished sons'. As the boy is depicted riding a hobby horse, this conveys the wish for it to come immediately or soon (*mashang*) which is a pun for 'to be on top of a horse'.

This lively motif continued to be used in jade carvings through to the Qing dynasty. For an eighteenth century example, see a white jade figure from the Muwen Tang collection, sold in these rooms, 1st December 2016, lot 158. Compare also a figure, depicted holding a rattle instead of a lotus stem, in the Museum of East Asian Art, Bath, coll. no. BATEA 1218; and a figure of a boy holding a lantern on a pole, from the collection of Florence and Herbert Irving and now in the Metropolitan Museum, New York, acc. no. 2015.500.5.14.



A BLACK AND CELADON JADE FIGURE OF A
MANDARIN DUCK
SONG – MING DYNASTY

the recumbent bird with its head turned slightly to one side,
grasping a curved stem of budding lotus in its beak, the stone
of a pale celadon tone suffused with attractive black inclusions
4.3 cm, 1¾ in.

HK\$ 40,000-60,000

US\$ 5,200-7,700

宋至明 墨青玉鴛鴦



**A WHITE JADE CARVING OF A TRUMPET VINE
17TH CENTURY OR EARLIER**

worked as two large floral blooms, with furled petals enveloped by long curling leaves, the petals and foliage finely detailed with incisions, the translucent stone of an even white colour
6.2 cm, 2³/₈ in.

See two similar carvings offered in this sale, **lots 1 and 79**.

HK\$ 40,000-60,000
US\$ 5,200-7,700

十七世紀或更早 白玉凌霄花



12

**A WHITE JADE FIGURE OF A DANCER
MING DYNASTY OR EARLIER**

depicted with the upper body bent to the right, her right hand raised before the chest and the left behind the head, rendered dressed in loose robes, the base pierced with an aperture
5.3 cm, 2 in.

HK\$ 20,000-30,000
US\$ 2,600-3,850

明或更早 白玉舞人



13

A FINELY CARVED WHITE JADE 'TRUMPET VINE' PLAQUE SONG – JIN DYNASTY

of oval section, sensuously fashioned in openwork, depicting two trumpet vines and smaller floral buds borne on curved leafy stems, each flower depicted with long stamens enclosed within six veined petals with furled edges, all surrounded by lush broad leaves, the translucent stone of an even white tone 8.1 cm, 3¼ in.

PROVENANCE

C.C. Teng & Co., Taipei.

HK\$ 300,000-400,000

US\$ 38,500-51,500

This plaque is notable for its skilfully rendered trumpet vines, which are sensitively modelled in openwork to capture the softness of the petals and detailed with finely incised veins on the leaves and flowers. The carver has successfully married a pebble of delicate and even white hue with an equally delicate design. Compare a similar plaque carved with the same subject and attributed to the Song dynasty, illustrated in *Compendium of Collections in the Palace Museum. Jade*, vol. 5, *Tang, Song, Liao, Jin and Yuan Dynasties*, Beijing, 2011, pl. 196, together with two further floral plaques, pls 197 and 198. See also a Yuan-dynasty oval plaque reticulated with a similar symmetrical floral spray design, from the Capital Museum, Beijing, illustrated in *Zhongguo yuqi quanji*, vol. 5, Beijing, 1998, pl. 177; and another attributed to the Jin period, in the Museum of East Asian Art, Bath, illustrated in Angus Forsyth and Brian McElney, *Jades from China*, Hong Kong, 1994, pl. 244.

A symbol of elegance and refinement as well as wealth and high social status, finely carved plaques such as the present example were used for personal adornment and the round shape of the present piece suggests that it may have been used as an ornamental plaque for a belt. Belts made of jade plaques sewn together appeared in China only around the 3rd and 4th century AD, and were probably derived from gold and silver prototypes that had been in use in the steppe areas. They were quickly adapted and incorporated into the traditional dress code and were produced in a variety of materials, jade being the most important. According to the *Ming hui yao* [Essential regulations of the Ming dynasty]: 'Those of the first rank wear jade belts; those of the second rank have patterned belts...' (see Jessica Rawson, *Chinese Jade from the Neolithic to the Qing*, London, 1995, p. 326).

宋至金 白玉鏤雕凌霄花帶板

來源：

慎德堂，台北

巧匠取淨白籽玉，妙琢凌霄花紋，嬌瓣婉柔，葉脈纖緻，生意盎然。比較一件宋代凌霄花紋玉板，刊載於《故宮博物院藏品大系：玉器卷5：唐宋遼金元》，北京，2011年，圖版196，同錄另二件花卉紋玉帶板，圖版197、198。並參考一件元代橢圓形玉帶板，亦鏤雕花卉紋，紋樣對稱，現藏北京首都博物館，錄於《中國玉器全集》，卷5，北京，1998年，圖版177；巴斯東亞藝術博物館藏一件金代作例，載於 Angus Forsyth 與 Brian McElney，《Jades from China》，香港，1994年，圖版244。

此式玉雕帶板雅緻珍稀，形制圓潤，用以鑲綴衣袍腰帶，象徵主人身份崇高、品味清雅。縫於腰帶上之玉雕帶板，可溯至公元三、四世紀，或取材自中亞地區之金銀製飾板，融入中原文化，成為傳統衣飾配件，材質各異，玉製帶板則屬最為貴重者。據《明會要》記載：「其帶：一品，玉；二品，花犀……」，可見玉帶飾只限最高等級之一品官佩戴（見羅森，《Chinese Jade from the Neolithic to the Qing》，倫敦，1995年，頁326）。





15

**A CELADON AND RUSSET JADE FIGURE OF
A HORSE
YUAN DYNASTY OR EARLIER**

the recumbent animal curled around its body with its head touching its hind hoof, its long mane and tail finely incised, the stone of a greyish celadon tone with russet patches
3.2 cm, 1¼ in.

**HK\$ 30,000-50,000
US\$ 3,850-6,500**

元或更早 青白玉帶皮臥馬

A PALE CELADON JADE FIGURE OF A DOG
MING DYNASTY OR EARLIER

the recumbent animal with the tail curled alongside its rear haunches and head resting on its front paws, the stone of a greyish celadon tone with patches of russet
4.2 cm, 1 $\frac{5}{8}$ in.

HK\$ 30,000-50,000

US\$ 3,850-6,500

明或更早 青白玉臥犬





17

17

A BLACK AND WHITE JADE 'PARROT'
GROUP
MING DYNASTY OR EARLIER

the bird skilfully worked from the black part of the stone, its wings finely incised with plumage, the head turned to its side and detailed with rounded eyes and a pointed beak, depicted perching on a leafy branch bearing two peaches
4.3 cm, 1¾ in.

HK\$ 15,000-25,000
US\$ 1,950-3,250

明或更早 墨白玉鸚鵡壽桃



18

18

A CELADON JADE 'BIRDS' GROUP
MING DYNASTY

the two recumbent birds rendered adjacent to each other in opposite orientation, each finely incised with feathers, the stone of a pale celadon tone with russet veins
6.8 cm, 2¾ in.

HK\$ 26,000-30,000
US\$ 3,350-3,850

明 青白玉雙鳥

A WHITE JADE FIGURE OF A FROLICKING
HORSE
MING DYNASTY

depicted playfully kissing its hind hoof, the face finely detailed
with almond-shaped eyes and a long combed mane, the stone
of an even white tone with brown veins
5.2 cm, 2 in.

HK\$ 80,000-120,000
US\$ 10,300-15,400

明 白玉雕嬉馬



**A PALE CELADON AND RUSSET JADE
FIGURE OF A DOG
SONG – MING DYNASTY**

the recumbent animal with an upward curling tail, its head facing forward and detailed with almond-shaped eyes and floppy ears, the stone of pale celadon and light grey tones with russet veining
5.5 cm, 2 $\frac{1}{8}$ in.

PROVENANCE

C.C. Teng & Co., Taipei, 1997.

**HK\$ 80,000-100,000
US\$ 10,300-12,900**

宋至明 青白玉犬

來源：
慎德堂，台北，1997年

Jade carvings of hound-like dogs in a resting pose with outstretched legs can be found from as early as the Tang dynasty, such as the carved figure included in the exhibition *Chinese Jade Animals*, Hong Kong, 1996, cat. no. 68. The present piece belongs to a group of distinctive jade animals delicately carved in naturalistic poses, popular from the Song dynasty to the early Qing dynasty. Their utilitarian function was as paperweights, but it is likely that such high-quality, sensitively rendered sculptures were kept as 'playthings' for scholars or wealthy patrons.

A related crouching yellow jade hound, from the Hei-Chi collection, modelled with a similar coiling tail, sold in these rooms, 8th April 2010, lot 1987, was included in the exhibition *Chinese Jade Carving*, Hong Kong Museum of Art, Hong Kong, 1983, cat. no. 136; and another, from the collection of Victor Shaw, was exhibited in *Exquisite Jade Carving: Figures, Animals, Ornaments*, University Museum and Art Gallery, University of Hong Kong, Hong Kong, 1996, cat. no. 79. See also a jade reclining dog, from the collections of Mrs Joan Barrow, Lord and Lady Cunliffe, and Mary and George Bloch, included in the Oriental Ceramic Society exhibition *Chinese Jade throughout the Ages*, London, 1975, cat. no. 251, sold in these rooms, 23rd October 2005, lot 20.

A jade dog from the Zhirouzhai collection, attributed to the Song dynasty, was included in the exhibition *Exquisite Jade Carving, op.cit.*, cat. no. 85, and sold in these rooms, 8th October 2008, lot 2312; and another was sold in these rooms, 8th April 2010, lot 2056. Compare also a jade reclining dog formerly in the Alsdorf collection, dated to the Ming dynasty or earlier illustrated in S. Marchant and Son, *Post-Archaic Chinese Jades from Private Collections*, London, 2000, cat. no. 78.





21

**A WHITE AND RUSSET JADE FIGURE OF A
TIGER
QING DYNASTY**

depicted recumbent with the head turned to the right, its right hind paw extended over the head, the beast finely detailed with incisions to simulate its furry body, the white pebble accentuated with attractive russet and black patches concentrating to the beast's back
4.4 cm, 1¾ in.

HK\$ 30,000-40,000
US\$ 3,850-5,200

清 褐斑白玉臥虎

A WHITE AND RUSSET JADE FIGURE OF A
HORSE
YUAN – MING DYNASTY

the recumbent animal caparisoned with a saddle fastened with
a rein around its snout, the stone of an even white tone with
russet patches
4 cm, 1 $\frac{5}{8}$ in.

HK\$ 26,000-30,000
US\$ 3,350-3,850

元至明 白玉臥馬





23

**A CELADON AND RUSSET JADE
'SCHOLAR' BRUSH REST
EARLY QING DYNASTY**

depicting a scholar reclining on a pile of books, the figure clad in loose robes and stroking his beard with the left hand, his right arm placed beneath his back, the light russet inclusions of the celadon stone skilfully utilised to depict the books
5.6 cm, 2 $\frac{1}{8}$ in.

**HK\$ 40,000-60,000
US\$ 5,200-7,700**

清初 青白玉高士筆擱

A WHITE AND BLACK JADE FIGURE
OF A BOY
MING DYNASTY

portrayed with the left foot playfully placed before
the right, the figure depicted clad in loose robes
and trousers, rendered holding with both hands a
long stem issuing a lotus bloom behind his head,
the white stone with black patches to the side and
flattened reverse

4.7 cm, 1 $\frac{7}{8}$ in.

HK\$ 10,000-20,000

US\$ 1,300-2,600

明 墨白玉雕持荷童子



24

A WHITE AND BROWN JADE
FIGURE OF A BOY
LATE MING – EARLY QING
DYNASTY

the cheerful boy seated on a wheeled cart, his
left hand holding the reins of a hobby horse and
the right arm raised carrying a lantern over his
shoulder, the stone of an even white tone flecked
with dark brown patches

6.2 cm, 2 $\frac{1}{2}$ in.

See a similar figure offered in this sale, **lot 10**.

HK\$ 30,000-40,000

US\$ 3,850-5,200

明末至清初 糖玉雕童子鬧元宵



25

**A WHITE AND RUSSET JADE FIGURE OF A ROOSTER
QING DYNASTY, KANGXI PERIOD OR EARLIER**

worked recumbent with its crowned head turned sharply backwards, its beak grasping a leafy millet spray, finely detailed with plumage, the stone of an even white tone with russet patches
h. 5.2 cm, 2 in.

**HK\$ 120,000-180,000
US\$ 15,400-23,100**

Small jade carvings of roosters are rare, and the present piece is a particularly exquisite example for its fine modelling. The translucency and even tone of the jade stone is enhanced by the soft round body, which in turns provides an attractive contrast to the detailed feathers of the tail and wings. The skilful incorporation of the natural russet inclusions of the stone not only displays the carver's appreciation of the precious material but also heightens the overall sense of three-dimensionality. It is interesting to note that this piece would have echoed the past as its pose is reminiscent of jade staff finials in the form of birds, such as one attributed to the Tang period, included in the exhibition *Chinese Jade Animals*, Hong Kong Museum of Art, Hong Kong, 1996, cat. no. 70.

A slightly larger jade rooster similarly modelled with its head turned back and grasping a sprig of chrysanthemum, was included in the exhibition *Chinese Jade Animals, op. cit.*, cat. no. 180. Compare also a carving of two roosters, attributed to the early Ming period, in the Museum of East Asian Art, Bath, illustrated in *Jades from China*, Bath, 1994, pl. 282.

清康熙或更早 白玉雕鴻運當頭瑞雞

玉雕臥雞甚為少見，本品造型小巧，線條圓潤，突顯玉石瑩潤通透，色澤均勻，亦見細節刻畫入微，雕工精美。褐皮巧用，獨具匠心，既體現工匠對玉石之珍愛，亦另臥雞更具立體之感。此玉雞之造型亦有唐代玉雕帽頂之風，見一玉鳥，定為唐代，展於《中國肖生玉雕》，香港藝術館，香港，1996年，編號70。

見一尺寸稍大之類例，雕臥雞回首銜菊花枝，展於《中國肖生玉雕》，前述出處，編號180。另可比較一雙雞作例，定為明代早期，藏於巴斯東亞藝術博物館，錄於《Jades from China》，巴斯，1994年，圖版282。



A WHITE JADE FIGURE OF A DAOIST
IMMORTAL
EARLY QING DYNASTY

portrayed standing and dressed in long flowing robes with the left arm raised carrying a *ruyi* sceptre, the stone of an even white tone
5.1 cm, 2 in.

HK\$ 15,000-20,000

US\$ 1,950-2,600

清初 白玉道家人物立像



27

A WHITE JADE FIGURE OF AN IMMORTAL
MING DYNASTY

rendered standing with the right arm bent and holding a staff suspending a fish behind his back, the figure depicted clad in long robes with flaring sleeves, the translucent stone of an even white colour with light russet inclusions
6.2 cm, 2³/₈ in.

HK\$ 30,000-40,000

US\$ 3,850-5,200

明 白玉神仙人物立像



28

A CELADON AND BLACK JADE FIGURE OF A DANCER
MING DYNASTY

portrayed in a dramatic posture with the upper body inclined to the right and the left arm raised over the head, the figure rendered clad in long robes tied at the front with a ribbon, the stone of variegated celadon and black tones
5.4 cm, 2 $\frac{1}{8}$ in.

HK\$ 20,000-30,000
US\$ 2,600-3,850

明 墨青玉舞者



29



30

A WHITE JADE FIGURE OF A PERFORMER
QING DYNASTY

depicted standing with her legs crossed and carrying a drum on one shoulder, with a monkey clambering on her back, the stone of an even white tone
5.5 cm, 2 $\frac{1}{4}$ in.

HK\$ 15,000-25,000
US\$ 1,950-3,250

清 白玉鳳陽婆戲猴

A WHITE JADE FIGURE OF A PIG LATE MING – EARLY QING DYNASTY

the recumbent animal with its head resting on its front legs, detailed with floppy ears, almond-shaped eyes and a flat snout, the stone of an even white tone flecked with russet
4.7 cm, 1 $\frac{7}{8}$ in.

HK\$ 20,000-30,000

US\$ 2,600-3,850

明末至清初 白玉臥豬



31

A WHITE JADE FIGURE OF A BADGER QING DYNASTY

worked recumbent with its head resting on its front paws, detailed with almond-shaped eyes above a pointed snout, the stone of an even white tone
5.3 cm, 2 $\frac{1}{8}$ in.

HK\$ 10,000-20,000

US\$ 1,300-2,600

清 白玉臥獾



32

A WHITE JADE 'CRANE' GROUP EARLY QING DYNASTY

worked recumbent with its head turned sharply backwards, its beak clutching a gnarled leafy branch issuing a pair of peaches, the wings finely incised with feathers, the stone of an even white tone
5.5 cm, 2¼ in.

HK\$ 30,000-50,000

US\$ 3,850-6,500

清初 白玉雕瑞鶴獻壽



33



34

A WHITE JADE 'MONKEY' GROUP QING DYNASTY

worked in the form of a seated monkey carrying a peach in its arms with its young beside, the stone of an even white tone with russet veins
3.8 cm, 1⅜ in.

HK\$ 20,000-30,000

US\$ 2,600-3,850

清 白玉靈猴獻壽

A WHITE AND GREY JADE 'MANDARIN
DUCKS' GROUP
QING DYNASTY

skilfully worked in the form of a mandarin duck with its young, the birds finely detailed with plumage picked out with incisions and rendered grasping in their beaks a long leafy lotus stem, the translucent white stone with mottled grey and brown markings

4.7 cm, 1 $\frac{7}{8}$ in.

HK\$ 26,000-30,000

US\$ 3,350-3,850

清 灰斑白玉雕銜蓮鴛鴦



35

A CELADON JADE 'GEESE' GROUP
QING DYNASTY

of pebble form, skilfully worked with the two birds grasping in their beaks a long leafy millet spray, their plumage finely detailed, all atop a base modelled as swirling waves, the pale celadon-white stone with greyish brown markings

6.2 cm, 2 $\frac{3}{8}$ in.

HK\$ 30,000-40,000

US\$ 3,850-5,200

清 玉雕寶鵝獻瑞



36

A WHITE AND RUSSET JADE FIGURE OF A
FROLICKING HORSE
QING DYNASTY

the animal playfully frolicking with its body curled around its head, detailed with almond-shaped eyes and an incised mane, the stone of an even celadon-white tone flecked with russet 5.5 cm, 2 $\frac{1}{8}$ in.

HK\$ 50,000-80,000

US\$ 6,500-10,300

清 白玉雕嬉馬



A PALE CELADON JADE 'ROCKWORK'
BRUSH REST
EARLY QING DYNASTY

rendered in the form of jagged rockwork centred with a flowing river stream, the craggy setting skilfully decorated with two birds and a frog, a small *lingzhi* spray growing from one side, the colour of a pale celadon colour mottled with icy inclusions, affixed to a lacquered wood stand
10 cm, 3⁷/₈ in.

HK\$ 30,000-50,000
US\$ 3,850-6,500

清初 青白玉賞石筆山



38

A CELADON AND GREY JADE 'DRAGON'
BRUSH REST
MING – EARLY QING DYNASTY

the horizontally orientated structure modelled with a jagged rockwork formation accentuated with cresting waves and a scaly dragon emerging through *ruyi* clouds, a small makara portrayed surging from the sea below, one side of the brush rest with a small receptacle, the celadon stone mottled with grey speckles
10.7 cm, 4¹/₈ in.

HK\$ 30,000-50,000
US\$ 3,850-6,500

This piece exemplifies the aesthetic taste of scholar-officials of the Ming and Qing dynasties, who sought objects for their studio that had a variety of functions, such as brush rests and paperweights, as well as being works of art in their own right. See a larger brush rest worked with a similar subject matter, dated to the Qing dynasty, sold in these rooms, 1st June 2017, lot 5. Another larger similar carving, in the Palace Museum, Beijing, is illustrated in *The Compendium of Collections in the Palace Museum. Jade*, vol. 9, *Qing Dynasty*, Beijing, 2011, pl. 64, together with one modelled as three peaks with *chilong*, pl. 66; and another was sold in our New York rooms, 21st March 2015, lot 692.

明至清初 灰青玉龍紋筆山



39

**A CELADON AND GREY JADE 'ROCKWORK'
PAPERWEIGHT
MING DYNASTY**

the horizontally orientated stone of irregular form, modelled with a central peak and craggy sides resembling a scholar's rock, the pale greyish celadon stone extensively marked with black striations

12.2 cm, 4¾ in.

HK\$ 30,000-50,000

US\$ 3,850-6,500

Small jade brush rests worked in the form of naturally occurring, evocatively shaped limestone rocks, were popular scholars' objects. See a similar but pierced Ming dynasty example sold in these rooms, 7th April 2014, lot 3688. For a Qianlong reign-marked pale green jade brush rest preserved in the Palace Museum, Beijing, see Chuimei Ho and Bennet Bronson, *Splendors of China's Forbidden City. The Glorious Reign of Emperor Qianlong*, London and New York, 2004, p. 90, pl. 98.

明 灰青玉雕賞石鎮紙



40



41

41

**A CELADON JADE CARVING OF A
SCHOLAR'S ROCK
LATE MING – EARLY QING DYNASTY**

standing on a narrowing foot and expanding towards the top, perforated with irregular openings, the stone of a pale celadon tone suffused with milky-caramel inclusions simulating the wrinkled texture of a rock

5.6 cm, 2¼ in.

HK\$ 30,000-40,000

US\$ 3,850-5,200

明末至清初 青白玉鏤雕賞石

A GREY AND WHITE JADE
'MANDARIN DUCKS' GROUP
MING DYNASTY OR EARLIER

the grey and white parts of the stone skilfully worked into two adjacent birds in recumbent positions, their wings incised with feathers
5.5 cm, 2¼ in.

HK\$ 30,000-50,000
US\$ 3,850-6,500

明或更早 灰白玉巧作鴛鴦成雙



42

A CELADON AND RUSSET JADE
FIGURE OF A MYTHICAL BEAST
YUAN – MING DYNASTY

the recumbent beast with its head alertly turned to one side, detailed with funnel-shaped ears, round eyes and a pointed beard, the stone of a pale celadon tone suffused with russet inclusions
4.3 cm, 1¾ in.

HK\$ 20,000-30,000
US\$ 2,600-3,850

元至明 青白玉瑞獸



43

A CELADON JADE FIGURE OF A
BOY
LATE MING – EARLY QING
DYNASTY

the forward leaning boy with legs crossed,
holding a leafy spray of lotus in his arms, the
stone of a pale celadon tone with russet veins
8.6 cm, 3 $\frac{3}{8}$ in.

HK\$ 40,000-60,000
US\$ 5,200-7,700

明末至清初 青白玉持荷童子



**A LARGE CELADON AND RUSSET JADE
'RABBIT' PLAQUE
SONG – JIN DYNASTY**

of oval section, the top deftly reticulated and worked in high relief, depicting two rabbits looking backwards at a mythical tortoise issuing scrolling clouds from its mouth, all amidst a rocky landscape with overhanging trees under the moon, the stone of a pale celadon tone with brown veins
11.4 cm, 4½ in.

PROVENANCE

C.C. Teng & Co., Taipei.

**HK\$ 150,000-200,000
US\$ 19,300-25,700**

The superb plaque is remarkable for its skilful carving in achieving several layers of depth on a thin and flat jade pebble. The carver has utilised as much of the precious stone as possible to fashion a scene of figures in a landscape, the foliage of which is cleverly picked out by the russet skin of the stone. In its three-dimensionality, the setting helps illustrate the narrative in a naturalistic manner.

A jade plaque dated to the Liao or Jin dynasty in the British Museum, decorated with a rabbit amidst lingzhi fungus, is illustrated in Jessica Rawson, *Chinese Jade. From the Neolithic to the Qing*, London, 1995, pl. 25:11. The precise rendering of the rabbit's form and posture closely matches that on the current plaque, as do other precise details, such as the near-identical incised almond-shaped eyes and other subtle details including the fur, so carefully delineated with gently incised lines. The vivid scrolling clouds emerging from the mouth of the tortoise on the current plaque also closely relate to the *lingzhi* fungus on the British Museum plaque.

The motif of two rabbits on the current plaque may have been used to recall an auspicious phrase, or be linked to immortality. For other Song dynasty representations of rabbits in jade, see the small pair illustrated in *Chinese Jade Animals*, Hong Kong Museum of Art, Hong Kong, 1996, cat. no. 101.

宋至金 青白玉梧桐雙兔牌飾

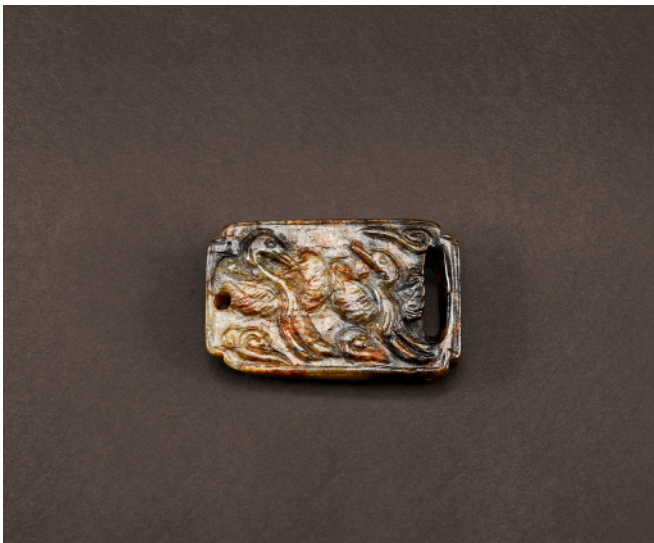
來源：
慎德堂，台北

梧桐雙兔玉牌，雕工精湛，構圖層次豐富，巧妙運用扁薄籽玉原石，紋飾立體，躍然生動，採玉皮褐斑琢作山石、林蔭，對比玉兔一白、另一毛色微帶淺斑，自然如生。

大英博物館藏一件遼至金代玉牌，綴玉兔靈芝紋，刊載於羅森，《Chinese Jade. From the Neolithic to the Qing》，倫敦，1995年，圖版25:11，玉兔姿態近類此例，雕工精準，眼梢、纖毛描寫與此件拍品如出一轍，此處繾綣靈動之雲煙亦與大英博物館藏品之靈芝紋相若。

雙兔紋飾寄意吉祥，或寓長生不老。參考另一件宋代兔紋玉雕，錄於《中國肖生玉雕》，香港藝術館，香港，1996年，編號101。





46

A BROWN JADE BELT BUCKLE LIAO – JIN DYNASTY

of lobed rectangular section with an elongated loop on one shorter edge, one side worked with a pair of cranes soaring amidst *ruyi* clouds, the component of a buckle further pierced with an aperture, the stone of a mottled grey colour with russet highlights

3.2 cm, 1¼ in.

HK\$ 2,000-3,000

US\$ 300-400

遼至金 褐玉雲鶴成雙帶釦

47

A SMALL CELADON JADE RETICULATED PLAQUE YUAN DYNASTY

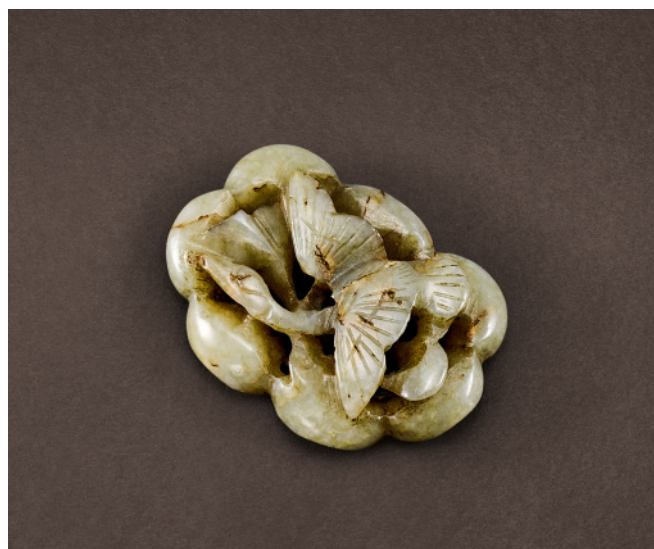
worked with a egret swooping downwards with outstretched wings, its plumage detailed with incised striations, all within a lobed border, the stone of a greyish celadon tone

3.8 cm, 1½ in.

HK\$ 3,000-4,000

US\$ 400-550

元 青白玉鏤雕白鷺佩飾



47

48

A CELADON AND RUSSET JADE BANGLE MING DYNASTY

with straight sides forming the cylindrical body, the warm yellowish-celadon stone with grey speckles and attractive russet patches

5.9 cm, 2¼ in.

HK\$ 15,000-25,000

US\$ 1,950-3,250

明 褐斑青白玉環



48

A WHITE JADE RETICULATED POMANDER MING – QING DYNASTY

well worked in the form of a flattened vase with a broad shoulder surmounted by a flared neck, each shallow rounded side reticulated with floral blooms borne on leafy stems, the stone of a pale greyish white colour
4.5 cm, 1¾ in.

HK\$ 15,000-25,000

US\$ 1,950-3,250

明至清 白玉鏤雕花卉紋瓶式香囊



49



50

50

A PAIR OF WHITE JADE RETICULATED 'BAMBOO' PLAQUES EARLY QING DYNASTY

each depicting a bamboo shoot detailed with nodes and flanked by leaves and a prunus blossom, the stone of a white colour
3.7 and 3.8 cm, 1⅜ and 1½ in.

HK\$ 8,000-12,000

US\$ 1,050-1,550

清初 白玉鏤雕梅竹雙清牌飾一對

51

A WHITE JADE LOBED AND RETICULATED POMANDER QING DYNASTY

of quatrefoil form, finely worked and pierced to each shallow side with a central quatrefoil cartouche framing lozenge motifs and curling foliage, all within a band of foliate stems issuing chrysanthemum blooms
6.3 cm, 2½ in.

HK\$ 30,000-50,000

US\$ 3,850-6,500

清 白玉鏤雕花葉紋花式香囊



51



52

**A PALE CELADON AND BROWN JADE
FIGURE OF A BIXIE
SONG – MING DYNASTY**

the recumbent beast with the head turned sharply backwards, detailed with rounded eyes, flaring nostrils and bushy eyebrows, surmounted by a single horn issuing from a combed mane, the stone of a brownish celadon tone suffused with caramel patches
4.2 cm, 1½ in.

**HK\$ 30,000-50,000
US\$ 3,850-6,500**

宋至明 青白玉辟邪



53

**A WHITE JADE 'LION' GROUP
SONG – MING DYNASTY**

the recumbent beast depicted with the head raised in alert, the front paw resting on its young beside, the lions detailed with furrowed eyebrows and rounded eyes beneath a long bushy mane, the stone of an even white tone
3.3 cm, 1³/₈ in.

**HK\$ 30,000-50,000
US\$ 3,850-6,500**

宋至明 白玉太獅少獅

The rendering of the eyes and the snout of the present piece share close similarities to a Liao-Jin dynasty example of similar subject in the Tianjin City Art Museum, illustrated in *Tianjin shi yishu bowuguan cang yu* [Tianjin City Art Museum. Jade], Hong Kong, 1993, pl. 177.

A CELADON AND RUSSET JADE FIGURE OF
A GOOSE
MING DYNASTY

depicted grasping in its beak a long leafy stem bearing a lotus bloom, the flattened body of the bird detailed with wings and plumage, the celadon stone with russet skin and inclusions
5.3 cm, 2 in.

HK\$ 26,000-30,000

US\$ 3,350-3,850

明 青白玉銜蓮寶鵝



54

A CELADON AND RUSSET JADE FIGURE OF
AN ELEPHANT
SONG – MING DYNASTY

standing foursquare, the head detailed with flattened ears and a curled trunk, the stone of a yellowish celadon tone suffused with russet patches
3.7 cm, 1½ in.

HK\$ 20,000-30,000

US\$ 2,600-3,850

宋至明 青玉象



55

A CELADON AND RUSSET JADE FIGURE OF
A HEN
MING DYNASTY

the recumbent bird with a long tail incised with neat feathers,
its head looking forward and detailed with a combed crown,
wattles and beak, the stone of a pale celadon tone with russet
veins

4.8 cm, 1 $\frac{7}{8}$ in.

HK\$ 10,000-20,000

US\$ 1,300-2,600

明 青白玉瑞雞



56



57

57

A PALE CELADON JADE FIGURE OF A CARP
QING DYNASTY

the fish rendered in swimming motion, grasping a curved stem
of lotus in its mouth, detailed with incised scales and tail, the
stone of an even pale celadon tone

5.7 cm, 2 $\frac{1}{4}$ in.

HK\$ 15,000-25,000

US\$ 1,950-3,250

清 青白玉年年有餘

A CELADON JADE FIGURE OF A MYTHICAL
BEAST
MING DYNASTY OR EARLIER

worked recumbent with its head gently lifted, detailed with a single horn between funnel-shaped ears, the stone of an attractive celadon tone with russet veins
5.7 cm, 2 $\frac{1}{8}$ in.

HK\$ 30,000-40,000
US\$ 3,850-5,200

明或更早 青玉瑞獸



58

A 'JADE-IMITATION' GLASS 'YINGXIONG'
GROUP
SONG – MING DYNASTY

the recumbent beast with head turned sharply backwards, facing an eagle perched on its back, the glass of a pale celadon tone in imitation of jade
5 cm, 2 in.

HK\$ 15,000-25,000
US\$ 1,950-3,250

宋至明 涅白琉璃英雄



59

A CELADON JADE FIGURE OF A MYTHICAL
BEAST
MING DYNASTY OR EARLIER

powerfully rendered seated, the head of the horned beast depicted lowered and highlighted with ferocious piercing eyes, the body pierced through vertically with an aperture, the celadon stone with light icy and russet inclusions
l. 5.2 cm, 2 in.

HK\$ 20,000-30,000

US\$ 2,600-3,850

明或更早 青白玉瑞獸



60



61

61

A CELADON JADE FIGURE OF A PERFORMER
MING – QING DYNASTY

depicted standing with the head gently tilted upwards and holding a leafy floral stem with the left hand, the figure rendered adorned with a metal headband and clad in long loose robes, the celadon stone with grey inclusions
7.3 cm, 2 $\frac{7}{8}$ in.

HK\$ 20,000-30,000

US\$ 2,600-3,850

明至清 青白玉戲曲人物



62

A GREY AND WHITE JADE 'BOYS' GROUP
SONG – MING DYNASTY

each face worked with a reclining boy dressed in loose robes,
the stone of an even white tone with light grey inclusions
4.5 cm, 1¾ in.

HK\$ 20,000-30,000

US\$ 2,600-3,850

宋至明 白玉雙喜童子



63

**A PALE CELADON JADE FIGURE OF A BOY
MING DYNASTY OR EARLIER**

depicted lying on his front with arms resting on a brocade ball,
the face with a cheerful expression, the stone of a pale celadon
tone with russet veins
3.1 cm, 1 $\frac{1}{8}$ in.

HK\$ 15,000-20,000
US\$ 1,950-2,600

明或更早 青白玉雕戲球童子



64

**A CELADON JADE 'BEAR' PLAQUE
YUAN DYNASTY**

the recumbent beast with the head turned backwards with an open mouth, with stylised foliate sprays in openwork springing from its back, the stone of a pale celadon tone with caramel brown inclusions
5.4 cm, 2 in.

**HK\$ 20,000-30,000
US\$ 2,600-3,850**

元 青白玉鏤雕卧熊



65

**A PALE CELADON JADE 'WINGED FIGURE'
FINIAL
JIN – YUAN DYNASTY**

the zoomorphic celestial figure depicted flanked by a pair of wings, the body terminating with a long curled tail, the plumage of the figure detailed with fine incisions, all atop a lobed oval hemispherical base, the stone of a pale celadon colour with light russet markings
4 cm, 1½ in.

**HK\$ 20,000-30,000
US\$ 2,600-3,850**

金至元 青白玉羽人頂飾

Compare a closely related figure in the Tianjin City Art Museum, of slightly earlier date in the Song dynasty, illustrated in *Tianjin shi yishu bowuguan cang yu* [Tianjin City Art Museum. Jade], Hong Kong, 1993, pl. 165.

**A CELADON JADE FIGURE OF
AVALOKITESHVARA WITH A GILT-BRONZE
STAND
FIGURE: YUAN – MING DYNASTY
STAND: QING DYNASTY, 19TH CENTURY**

worked seated in *rajalilasana* on a recumbent lion with its head and gaping jaws turned backward and its tail swept against its haunch, all atop a lotus base, the deity with the right hand resting on his raised right knee, further rendered cloaked in long flowing robes and adorned with beaded jewellery, the serene expression framed by a pair of pendulous earlobes and an elaborate headdress, the gilt-bronze stand bordered with a scrollwork band and a frieze of upright lotus petals, the curved mandorla reticulated with a lotus bloom wreathed by scrolling foliage and a roundel decorated in gilt with a figure at the front and in cloisonné enamel with a *shou* medallion on the reverse, all within with a flaming border

figure 14.9 cm, 5 $\frac{7}{8}$ in.

stand 23 cm, 9 in.

PROVENANCE

C.C. Teng & Co., Taipei.

HK\$ 90,000-120,000

US\$ 11,600-15,400

元至明 青白玉觀世音菩薩坐像
清十九世紀 鎏金銅須彌座連背光

來源：

慎德堂·台北

The deity is depicted seated on a lion with its mouth opened in a vigorous growl, depicting 'Guanyin of the Lion Roar' (Simhanada Avalokiteshvara); the intense moment of transcendent enlightenment. Her serene features convey a sense of profound thought and wisdom which contrasts with the ferocity of the lion. Together, the two figures represent an image of controlled power and harmony.

The present lot belongs to a group of jade bodhisattvas commissioned to furnish Buddhist shrines and probably used for private worship. Such figures were also known to exist in other forms of media such as metal, stone, jadeite and wood, and were popular throughout the Ming and Qing dynasties. It is likely that this figure, although created in the Ming dynasty, continued to serve as an image for worship in the Qing dynasty. The gilt-bronze stand, in its size and height, is in almost seamless concordance with the jade figure; suggesting this could be a tailor-made addition by a Qing-dynasty worshipper. A closely related example, rendered almost identically to the present piece but lacking a separate stand, is in the collection of Palace Museum, Beijing, illustrated in *Zhongguo yuqi quanji* [Complete collection of Chinese Jades], vol. 5, Shijiazhuang, 1993, pl. 313.



A CELADON JADE FIGURE OF A BOY MING DYNASTY

standing with the left leg crossed over the right, depicted holding with both hands a long stem issuing a lotus pod and a large leaf behind his shoulders, the cheerful figure further portrayed with two topknots and clad in loose robes detailed with a thin diapered band, the stone of a pale celadon colour flecked with brown
5.6 cm, 2 $\frac{1}{8}$ in.

HK\$ 15,000-25,000

US\$ 1,950-3,250

明 青白玉持荷童子



67

A PALE CELADON AND BROWN JADE FIGURE OF A BOY MING DYNASTY

standing with legs crossed, holding a curved stem issuing a lotus flower and leaf behind his shoulders, the cheerful face beneath hair gathered into a topknot, the stone of a pale celadon tone flecked with brown
5 cm, 2 in.

HK\$ 10,000-20,000

US\$ 1,300-2,600

明 青白玉持荷童子



68

A YELLOW AND RUSSET JADE FIGURE OF A BOY
MING DYNASTY

standing with his left hand lifted to his waist, his right arm raised carrying a leafy stem of budding lotus around his back, the stone of a yellowish celadon tone with russet patches
4.5 cm, 1¾ in.

HK\$ 20,000-30,000
US\$ 2,600-3,850

明 黄玉持荷童子



69



70

A CELADON JADE FIGURE OF A BOY
MING DYNASTY OR EARLIER

depicted in walking motion, with arms raised to the chest carrying a rabbit, dressed in long robes falling off one shoulder, the cheerful face surmounted by a tuft of hair, the stone of a greyish celadon tone
5.3 cm, 2¼ in.

HK\$ 15,000-20,000
US\$ 1,950-2,600

明或更早 青白玉執兔童子

A WHITE JADE FIGURE OF A BOY MING DYNASTY

standing with his legs crossed, his left arm raised holding curved stems of lotus flowers behind his shoulder and waist, the stone of an even white tone
6.6 cm, 2 $\frac{5}{8}$ in.

HK\$ 20,000-30,000

US\$ 2,600-3,850

明 白玉持荷童子



71

A SMALL CELADON JADE FIGURE OF A BOY SONG – MING DYNASTY

the standing cheerful boy depicted holding a *qin* in his arms, the stone of a greyish celadon tone
3.5 cm, 1 $\frac{3}{8}$ in.

HK\$ 20,000-30,000

US\$ 2,600-3,850

宋至明 青白玉攜琴童子



72

**A WHITE AND BLACK JADE FIGURE OF A BOY
MING DYNASTY OR EARLIER**

with the left foot playfully placed before the right, the left arm raised and holding in the hand a long stem issuing a lotus bloom behind his head, the stone skilfully worked with the black and dark brown patches concentrating on the reverse

6.7 cm, 2 $\frac{3}{8}$ in.

HK\$ 15,000-25,000
US\$ 1,950-3,250

明或更早 墨白玉持荷童子



73



74

**A PALE CELADON AND RUSSET JADE
FIGURE OF A BOY
YUAN – MING DYNASTY**

the pebble sensuously worked as a standing boy with arms raised holding an opened scroll, detailed with downcast eyes and a funnel-shaped nose, the stone of a pale celadon tone with russet veins

5.5 cm, 2 $\frac{1}{4}$ in.

HK\$ 20,000-30,000
US\$ 2,600-3,850

元至明 褐斑青白玉讀書童子

A WHITE JADE RETICULATED 'DRAGON'
PLAQUE
PROBABLY MING DYNASTY

depicting a coiled scaly dragon ferociously soaring amidst scrolling foliage, the beast rendered with gaping jaws and partially framed by three bracket lobes, the stone of an even milky white colour
5.3 cm, 2 in.

HK\$ 20,000-30,000

US\$ 2,600-3,850

或明 白玉鏤雕雲龍牌飾



75

A PALE CELADON JADE RETICULATED
'LOTUS' PLAQUE
SONG – YUAN DYNASTY

of oval section, the front reticulated and worked in relief, depicting a small tortoise perched on a broad leaf with furled edges, amongst a pond with flowering lotus and arrowheads, the stone of a pale celadon tone
7.6 cm, 2⁷/₈ in.

HK\$ 40,000-60,000

US\$ 5,200-7,700

A pair of plaques of almost identical form in the Capital Museum, Beijing, attributed to Jin dynasty, is illustrated in *Gems of Beijing cultural relic series: Jades*, Beijing, 2001, pl. 106.

宋至元 青白玉鏤雕蓮塘牌飾



76

A CELADON JADE 'LOTUS POND' PLAQUE
QING DYNASTY, 18TH CENTURY

depicting two birds flying freely above a pond, the setting further detailed with large lotus pads and blooms, the stone of a pale celadon colour
8.9 cm, 3½ in.

HK\$ 15,000-20,000
US\$ 1,950-2,600

清十八世紀 青白玉蓮塘雙鳥牌飾



77



78

A PALE CELADON JADE RETICULATED
'DRAGON' PLAQUE
MING – QING DYNASTY

of rectangular form, reticulated with a dragon writhing amongst *lingzhi* scrolls and clouds, the stone of a pale celadon tone
5.2 cm, 2 in.

HK\$ 15,000-25,000
US\$ 1,950-3,250

明至清 青白玉鏤雕雲龍牌飾



79

79

**A WHITE JADE CARVING OF A TRUMPET VINE
MING DYNASTY OR EARLIER**

deftly worked as two trumpet vines borne on leafy curled stems, the lustrous stone of an even white colour
5 cm, 2 in.

See two similar carvings offered in this sale, **lots 1 and 12.**

HK\$ 26,000-30,000

US\$ 3,350-3,850

明或更早 白玉雕凌霄花

80

**A WHITE JADE FIGURE OF A SQUIRREL
QING DYNASTY**

the recumbent animal with a long bushy tail curled atop its body, its head resting on its front paws and detailed with almond-shaped eyes below funnel-shaped ears, the stone of an even white tone
5.6 cm, 2¼ in.

HK\$ 20,000-30,000

US\$ 2,600-3,850

清 白玉松鼠



80

A PALE CELADON JADE CARVING OF
FLORAL BUDS
LATE MING – EARLY QING DYNASTY

worked in the form of a curved stem issuing two adjacent floral buds, above a broad leaf forming the base, the stone of an even pale celadon tone
8 cm, 3¼ in.

HK\$ 10,000-20,000
US\$ 1,300-2,600

明末至清初 青白玉花蕾



81



82

A PARTLY CALCIFIED CELADON JADE
BANGLE
MING DYNASTY

the exterior finely incised with a stylised frieze of hexagonal motifs and striations, all between two thin bands, the white stone with light russet inclusions and a calcified streak to one side
6 cm, 2¾ in.

HK\$ 15,000-20,000
US\$ 1,950-2,600

明 青白玉環

A YELLOW JADE 'GEESE' GROUP MING DYNASTY

well worked with soft rounded contours, depicting a goose and its young endearingly nuzzling each other, the larger goose rendered grasping in its beak a millet stem, the stone of an attractive warm yellow colour highlighted with light russet markings

4.3 cm, 1 $\frac{5}{8}$ in.

HK\$ 80,000-120,000

US\$ 10,300-15,400

明 黃玉雙鵝

Sensuously fashioned in the round, the present carving combines the craftsman's creativity in liberating a naturalistic charming subject from a pebble of attractive warm yellow hue. It encapsulates an intimate moment where two geese lay adjacent to each other with their heads nestled upon each other's backs.

Such depiction of twin geese or birds was popular from the Song through to the Qing dynasties, however, the combination of distinct yet simple forms with freely incised detailing, as seen on the birds' feathers, is reminiscent of naturalistic carvings of animals in the Ming dynasty. A closely related jade group of two mandarin ducks, also attributed to the Ming dynasty, was sold in our rooms, 8th April 2013, lot 3220. Compare also a grey jade carving of ducks, attributed to the late Ming dynasty, sold at Christie's London, 17th May 2013, lot 1472.

Geese in China are closely associated with the calligrapher Wang Xizhi (AD 303-361). Wang's fondness for geese was legendary and the story of him copying the Daoist classic *Daodejing* for a priest in exchange for a white goose is well known. The symbolic association of the goose with Wang, coupled with the graceful form of this piece would have carried a powerful meaning to its owner and to any member of the literati class.



A BLACK AND WHITE JADE 'BADGERS'
GROUP
MING DYNASTY OR EARLIER

the black and white parts of the stone skilfully worked as a pair of adjacent recumbent badgers, each animal detailed with funnel-shaped ears above rounded eyes
3.4 cm, 1¼ in.

HK\$ 15,000-25,000
US\$ 1,950-3,250

明或更早 墨白玉巧雕雙獸



84

A WHITE JADE FIGURE OF A LION
LATE MING – EARLY QING DYNASTY

portrayed recumbent with the head turned to the left and the front paws placed together at the front, the beast depicted revealing its teeth below its bulging eyes and flaring nostrils, the spine subtly defined and terminating in a bushy tail swept over its haunch, the stone of a white colour
4.5 cm, 1¾ in.

HK\$ 20,000-30,000
US\$ 2,600-3,850

明末至清初 白玉卧獅



85

A PALE CELADON JADE FIGURE OF A HORSE QING DYNASTY

well depicted recumbent and turning its head back to nuzzle its right rear hoof, the animal rendered lying on its side with both hind legs turned up, the stone of a pale celadon colour with light russet speckles

6.1 cm, 2 $\frac{3}{8}$ in.

HK\$ 30,000-50,000

US\$ 3,850-6,500

清 青白玉臥馬



86



87

87

A PALE CELADON JADE FIGURE OF A DOG QING DYNASTY

modelled recumbent with the tail curled alongside its rear haunches, its head turned sharply backwards, detailed with a long snout below almond-shaped eyes and funnel-shaped ears, the stone of an even pale celadon tone

4.6 cm, 1 $\frac{3}{4}$ in.

HK\$ 15,000-20,000

US\$ 1,950-2,600

清 青白玉臥犬



88

**A CELADON AND RUSSET JADE FIGURE OF
A HORSE
MING DYNASTY**

the recumbent animal with head slightly lowered, caparisoned with an elaborate saddle on its back and fastened with reins around its face, the stone of a celadon tone flecked with russet
8.4 cm, 3¼ in.

PROVENANCE

An English private collection.
Bonhams London, 12th May 2011, lot 2.

**HK\$ 30,000-40,000
US\$ 3,850-5,200**

明 青白玉臥馬

來源：

英國私人收藏

倫敦邦瀚斯2011年5月12日，編號2

Caparisoned horses were a popular representation amongst existing jade carvings of horses. Such representation drew closer parallel to ancient tomb models made of ceramic or stone.

A near identical Yuan-Ming dynasty jade horse from the collection of Victor Shaw was illustrated in James C.Y Watt, *Chinese Jades from Han to Ch'ing*, The Asia Society, New York, 1980, p. 83, pl. 66. Another closely related jade horse, dated to Yuan dynasty or later, was included in the exhibition catalogue *Chinese Jade Animals*, Hong Kong Museum of Art, Hong Kong, 1996, p. 152, cat. no. 134. See also a similar Ming-dynasty example from the collection of Dr S.Y. Kwan, illustrated in Chan Lai Pik, *Chinese Jades: The Dr S.Y. Kwan Collection*, Hong Kong, 2012, pl. 63.

A CELADON JADE FIGURE OF A DAOIST
IMMORTAL
YUAN – MING DYNASTY

seated with his arms folded before his front, wearing long robes falling into voluminous folds, the face with a benevolent expression and crowned with a hat, the stone of a celadon tone with brown veins
5.8 cm, 2¼ in.

HK\$ 35,000-50,000

US\$ 4,500-6,500

元至明 青白玉道家人物



A PALE CELADON JADE 'SCHOLAR' PEBBLE QING DYNASTY, 17TH CENTURY

the substantial stone of oval section, worked on one face in relief depicting a scholar seated on a rocky ledge in a grotto, his head lifted looking at clouds of vaporous steam issuing from a boiling kettle before him, the reverse similarly worked with a gnarled pine tree amongst overhanging rocks, the stone of an even pale celadon tone
8.2 cm, 3¼ in.

EXHIBITED

Jade: Ch'ing Dynasty Treasures from the National Museum of History, National Museum of History, Taipei, 1997.

The Bowers Museum of Cultural Art, Santa Ana, California, 1997-1998.

The Houston Museum of Natural Science, Houston, Texas, 1998, cat. no. 14.

LITERATURE

C.C. Teng & Co., *Jade Furnishings from the Scholar's Studio of Eighteenth Century*, Taipei, 2001, cat. no. 13.

HK\$ 100,000-150,000
US\$ 12,900-19,300

This animated carving has been carefully worked with strong literati allusions where a scholar is seated within a grotto boiling tea. The depiction of a reclusive scholar in a rustic natural setting epitomises the concept of 'landscape in miniature'. Small jade carvings of this type were often found on scholar's desks, and served as vehicles for the scholar and connoisseur to be transported in their imagination to far-off realms.

Although jade mountains of varying sizes rendered with similar subjects were widely known in the late Ming and Qing dynasties, pebbles of such form worked with a scholarly scene were relatively unusual. The present carving, with its manageable size, would have served not only as a paperweight, but also a pleasing object to handle or amuse in a scholar's studio.

Compare a slightly larger pebble from the collection of Dr Ip Yee, carved with a luohan in a grotto, attributed to late Ming-early Qing dynasty, included in the exhibition *Chinese Jade Carving*, Hong Kong Museum of Art, Hong Kong, 1983, p. 262, cat. no. 234.

清十七世紀 青白玉雕山居煮茗鎮紙

展覽：

《清代玉雕之美》，國立歷史博物館，台北，1997年
寶爾文化藝術博物館，加州聖塔安娜，1997-1998年
休士頓自然科學博物館，德州休士頓，1998年，編號14

出版：

慎德堂，《憐香惜玉》，台北，2001年，編號13。

青白籽玉巧琢岩間高士烹茗閒情，文雅愜意，此類描寫鄉野隱士之玉雕鎮紙仿若微觀山水，置於文人案頭，尺牘之間可移情神游，心遠地自偏。

晚明以降雖可見各式尺寸、類似題材之玉石山子，如同此件拍品之卵石鎮紙卻甚少見，尺寸適手，把玩揣摩，不僅可做鎮紙，亦是文房雅玩。

比較葉義醫師舊藏一件明末清初卵石形岩洞羅漢鎮紙，尺寸略大，展出於《中國玉雕》，香港藝術館，香港，1983年，頁262，編號234。





91

A CELADON AND RUSSET JADE 'RABBITS'
GROUP
SONG – MING DYNASTY

skilfully worked through the russet skin with two adjacent rabbits facing opposite directions, one grasping a *lingzhi* spray in its mouth, the stone of a pale celadon tone
4.2 cm, 1½ in.

HK\$ 26,000-40,000
US\$ 3,350-5,200

宋至明 褐斑青白玉雙兔

A CELADON AND BROWN JADE 'TIGER'
GROUP
PROBABLY QING DYNASTY

well worked and reticulated in the form of a tiger trampling ferociously on a *chilong*, the latter portrayed defending with an extended foreleg, the tiger further rendered with gaping jaws and a body detailed with incised streaks, the light brown section of the yellowish celadon pebble utilised to depict the heads of the beasts
5.2 cm, 2 in.

HK\$ 30,000-40,000
US\$ 3,850-5,200

或清 青白玉鑲雕龍虎相爭

Skilfully carved in the round, this piece is notable for the clever use of the natural colouration of the stone to highlight the ferocious expression of the tiger who holds the *chilong* to the ground. The subject of a tiger and *chilong* is rare, although depictions of tigers in combat are known in jade and bronze from as early as the Han dynasty, such as the carving in the British Museum, London, illustrated in Jessica Rawson, *From the Neolithic to the Qing*, London, 1995, pl. 26:5, together with its bronze counterpart, p. 361, fig. 1.





93

93

**A CELADON AND BLACK JADE FIGURE OF A RABBIT
MING DYNASTY**

portrayed recumbent with the head resting on the front paws, the rounded contours of the body terminating with a bushy tail swept up against its haunch, the pebble of variegated celadon and black tones
3.9 cm, 1½ in.

**HK\$ 15,000-25,000
US\$ 1,950-3,250**

明 墨青玉兔

94

**A WHITE AND RUSSET JADE FIGURE OF A MYTHICAL BEAST
20TH CENTURY**

rendered with the front paws placed together at the front, the beast depicted ferocious with the head held high and an open mouth below bulging eyes, the body with rounded contours and incised striations, the milky white stone with russet highlights
4.2 cm, 1⅝ in.

**HK\$ 3,000-5,000
US\$ 400-650**

二十世紀 褐斑白玉瑞獸



94

95

**A CELADON JADE 'FISH' GROUP
MING DYNASTY**

of flattened form, worked as a fish grasping in its mouth a leafy stem bearing on one side a large lotus bloom and a lotus leaf on the reverse, the fish picked out with incised motifs and striations
6.5 cm, 2½ in.

**HK\$ 3,000-4,000
US\$ 400-550**

明 青白玉雕富貴和合



95

A CELADON AND RUSSET JADE FIGURE OF
A DOG
MING DYNASTY

skilfully depicted recumbent with the head resting on its front paws, its body centred with a spinal column flanked by incisions simulating its ribs, the translucent pebble of variegated celadon and russet tones
5.2 cm, 2 in.

HK\$ 20,000-30,000
US\$ 2,600-3,850

明 青玉臥犬



96



97

97

A CELADON AND RUSSET JADE FIGURE OF
A DOG
20TH CENTURY

rendered recumbent with the head slightly tilted upwards and the front paws placed together at the front, depicted with an elongated and slender body detailed with ribs and terminating with a bushy tail, the celadon stone with russet streaks and light grey inclusions
4.4 cm, 1¾ in.

HK\$ 2,000-3,000
US\$ 300-400

二十世紀 青玉臥犬

98

A SMALL WHITE GLASS BUDDHIST FIGURAL
ORNAMENT
PROBABLY MING DYNASTY

depicting a figure seated with the hands clasped before the chest on a base, all below a headdress, the flat reverse pierced with an aperture
4 cm, 1½ in.

HK\$ 2,000-3,000
US\$ 300-400

或明 涅白琉璃佛教人物坐像飾



98

End of Sale

INTERNATIONAL ASIAN ART DEPARTMENTS

For a full listing of our offices and salerooms worldwide with detailed information on all of Sotheby's services, visit sothebys.com

INTERNATIONAL CHINESE CERAMICS AND WORKS OF ART DEPARTMENTS

Worldwide Head & Chairman

Nicolas Chow
+852 2822 8123

Chairman, Asian Art, Europe and Americas

Henry Howard-Sneyd
+44 20 7293 5530

Vice Chairman, Chinese Art

Mee-Seen Loong
+1 212 606 7332

International Specialists

Ryoichi Hirano
Julian King
Carrie Li
+852 2822 8128

Senior Specialist, Europe

Dr. Caroline Schulten
+33 1 5305 5242

International Research

Regina Krahl ‡
Jungeun Lee
Isabella Tedeschi
+44 20 7293 5879

New York

Angela McAteer
Christina Prescott-Walker
Cynthia Volk
Phyllis Kao
Hannah Thompson
Hang Yin
Justin Cheung
+1 212 606 7332

London

Robert Bradlow
Stephen Loakes
Lauren Long
+44 20 7293 6442

Paris

Dr. Caroline Schulten
Olivier Valmier
Emmanuelle Chan
+33 1 5305 5242

Hong Kong

Nicolas Chow
Sam Shum
Christian Bouvet
Amethyst Chau
Vivian Tong
Carmen Li
Cristine Li
+852 2822 8128

Beijing

Peter Song
+86 10 6408 8933

Taipei

Ching Yi Huang
+886 2 2757 6689

Tokyo

Mizuka Seya
+81 3 3230 2755

INTERNATIONAL CHINESE PAINTINGS DEPARTMENTS

New York

Classical Chinese Paintings
Xian Fang
Tianhan Gao
+1 212 894 1177

Hong Kong

Classical Chinese Paintings
Steven Zuo
Sally Fong
Rongde Zhang*
+852 2822 9013

Chinese Paintings

C.K. Cheung
Carmen Ip
Jing Jing Qiao
Annie Wong
+852 2822 8132

Contemporary Ink Art

MeeSeen Loong*
Katherine Don
+852 822 9019

Taipei

Shuni Li
+886 2 2757 6689

* Based in New York

INTERNATIONAL INDIAN, HIMALAYAN AND SOUTHEAST ASIAN DEPARTMENTS

International Head

Yamini Mehta
+44 20 7293 5940

New York

Works of Art
Anuradha Ghosh-Mazumdar
Jacqueline Dennis
Modern & Contemporary Art

Anuradha Ghosh-Mazumdar

Manjari Sihare
+1 212 606 7304

London

Middle East and Islamic Art
Edward Gibbs
Benedict Carter
Alexandra Roy
Marcus Fraser ±
+44 20 7293 5112

Indian Art

Yamini Mehta
Ishrat Kanga
+44 20 7293 5940

Paris

Dr. Caroline Schulten
+33 1 5305 5242

Hong Kong

Shea Lam
+852 2822 8155

Singapore

Mok Kim Chuan
Rishika Assomull
Michelle Yaw
+65 6732 8239

Taipei

Claire Liao
+886 2 2757 6689

LIAISON OFFICES

Bangkok

Wannida Saetieo
+66 2286 0788

Beijing

Peter Song
Ying Wang
+86 10 6408 8771

Brussels

Marianna Lora
+32 2 627 71 98

Jakarta

Jasmine Prasetyo
+62 21 5797 3603

Kuala Lumpur

Walter Cheah ±
+60 3 2070 0319

Mumbai

Gaurav Bhatia
+91 22 6665 3407

Philippines

Angela Hsu ±
+63 917 815 0075

Shanghai

Rachel Shen
+86 21 6288 7500

Singapore

Esther Seet
+65 6732 8239

Taipei

Wendy Lin
+886 2 2757 6689

Tokyo

Ryoichi Hirano
+81 3 3230 2755

Toronto

Lucila Portoraro
+41 69 261 774

Consultant ‡

NOTES

CHRONOLOGY 中國歷代年表

新石器時代	NEOLITHIC	10th-early 1st millennium BC
商	SHANG DYNASTY	16th century - c.1046 BC
周	ZHOU DYNASTY	c.1046 - 221 BC
西周	Western Zhou	c.1046 - 771 BC
東周	Eastern Zhou	770 - 256 BC
春秋	Spring and Autumn	770 - 476 BC
戰國	Warring States	475 - 221 BC
秦	QIN DYNASTY	221 - 206 BC
漢	HAN DYNASTY	206 BC - AD 220
西漢	Western Han	206 BC - AD 9
東漢	Eastern Han	AD 25 - 220
三國	THREE KINGDOMS	220 - 265
晉	JIN DYNASTY	265 - 420
西晉	Western Jin	265 - 316
東晉	Eastern Jin	317 - 420
南北朝	SOUTHERN AND NORTHERN DYNASTIES	420 - 589
宋	Song	420 - 479
齊	Qi	479 - 502
梁	Liang	502 - 557
陳	Chen	557 - 589
北魏	Northern Wei	386 - 534
東魏	Eastern Wei	534 - 550
西魏	Western Wei	535 - 557
北齊	Northern Qi	550 - 577
北周	Northern Zhou	557 - 581
隋	SUI DYNASTY	581 - 618
唐	TANG DYNASTY	618 - 907
五代	FIVE DYNASTIES	907 - 960
遼	LIAO DYNASTY	907 - 1125
宋	SONG DYNASTY	960 - 1279
北宋	Northern Song	960 - 1127
南宋	Southern Song	1127 - 1279
夏	XIA DYNASTY	1038 - 1227
金	JIN DYNASTY	1115 - 1234
元	YUAN DYNASTY	1279 - 1368
明	MING DYNASTY	1368 - 1644
洪武	Hongwu	1368 - 1398
永樂	Yongle	1403 - 1424
宣德	Xuande	1426 - 1435
正統	Zhengtong	1436 - 1449
景泰	Jingtai	1450 - 1456
天順	Tianshun	1457 - 1464
成化	Chenghua	1465 - 1487
弘治	Hongzhi	1488 - 1505
正德	Zhengde	1506 - 1521
嘉靖	Jiajing	1522 - 1566
隆慶	Longqing	1567 - 1572
萬曆	Wanli	1573 - 1620
天啟	Tianqi	1621 - 1627
崇禎	Chongzhen	1628 - 1644
清	QING DYNASTY	1644 - 1911
順治	Shunzhi	1644 - 1661
康熙	Kangxi	1662 - 1722
雍正	Yongzheng	1723 - 1735
乾隆	Qianlong	1736 - 1795
嘉慶	Jiaqing	1796 - 1820
道光	Daoguang	1821 - 1850
咸豐	Xianfeng	1851 - 1861
同治	Tongzhi	1862 - 1874
光緒	Guangxu	1875 - 1908
宣統	Xuantong	1909 - 1911
中華民國	REPUBLIC OF CHINA	1912 -
洪憲	Hongxian	1915 - 1916
中華人民共和國	PEOPLE'S REPUBLIC OF CHINA	1949 -

GLOSSARY FOR CHINESE WORKS OF ART

The following are examples of the terminology used in this catalogue. Please note that all statements are made subject to the provisions of the Conditions of Business and Authenticity Guarantee.

1. When a piece is in our opinion of a certain period, reign or dynasty, this attribution appears in bold type, directly below the heading of the catalogue entry for every lot

e.g. A blue and white dish in our opinion of the Jiaping period of the Ming dynasty is catalogued as:
A Blue and White Dish, Ming Dynasty, Jiaping period

2. No firm attribution to a period is intended by any work in a description not confirmed by an attribution in bold type after the heading of the lot.

3. Where attribution is given in the heading for a lot and there is more than one piece in the lot, all the pieces in the lot belong in our opinion to the period in bold unless specifically stated to be otherwise.

4. Where no attribution is given to a piece, it is of doubtful period in our opinion or of 19th or 20th century date.

5. With respect to Asian hardwoods, the terms 'Huanghuali', 'Huali' 'Hongmu' 'Zitan' and others appearing within single quotes in bold or capital letters in the heading are descriptive identifications based on appearance, and are not intended to denote a specific scientific species.

IMPORTANT NOTICE

Please note that all lots are sold subject to our Conditions of Business for Buyers and Authenticity Guarantee, which are set forth at the back of this catalogue and Conditions of Business for Sellers, which are available from Sotheby's offices on request. Prospective bidders should review the Conditions of Business, Authenticity Guarantee and the Guide for Prospective Buyers. Nevertheless, prospective buyers are reminded that all lots are sold as shown and their attention is drawn to Condition 3 of Conditions of Business for Buyers printed in this catalogue.

Ivory Some items in this sale contain ivory which may be subject to export and import restrictions. In addition, African elephant ivory cannot be imported into the United States. Please refer to the Endangered Species section in the Buying at Auction guide printed in the catalogue. Your attention is also drawn to Condition 10 of the Conditions of Business for Buyers.

GUIDE FOR PROSPECTIVE BUYERS

Buying at Auction The following pages are designed to give you useful information on how to buy at auction. Sotheby's staff as listed at the front of this catalogue will be happy to assist you. However, it is important that you read the following information carefully and note that Sotheby's acts for the seller; you should refer in particular to Conditions 3 and 4 of the Conditions of Business for Buyers printed in this catalogue. Prospective bidders should also consult

www.sothebys.com for the most up to date cataloguing of the property in this catalogue.

Provenance In certain circumstances, Sotheby's may print in the catalogue the history of ownership of a work of art if such information contributes to scholarship or is otherwise well known and assists in distinguishing the work of art. However, the identity of the seller or previous owners may not be disclosed for a variety of reasons. For example, such information may be excluded to accommodate a seller's request for confidentiality or because the identity of prior owners is unknown given the age of the work of art.

Buyer's Premium A buyer's premium will be added to the hammer price and is payable by the buyer as part of the total purchase price. The buyer's premium is 25% of the hammer price up to and including HK\$2,400,000, 20% of any amount in excess of HK\$2,400,000 up to and including HK\$22,500,000, and 12.9% of any amount in excess of HK\$22,500,000.

1. BEFORE THE AUCTION

Catalogue Subscriptions If you would like to take out a catalogue subscription, please ring (852) 2822 8142.

Deposit If you wish to bid on (👉) lots in the printed catalogue and (👈) lots in the eCatalogue, you may be requested by Sotheby's to deliver to Sotheby's a deposit of HK\$5,000,000 or such other higher amount as may be determined by Sotheby's (for any items of Chinese Works of Art, Fine Chinese Paintings, Fine Classical Chinese Paintings, Magnificent Jewels & Jadeite and Modern & Contemporary Art – Evening Sale) and of HK\$2,000,000 or such higher amount as may be determined by Sotheby's (for any items in other categories), and any financial references, guarantees and/or such other security as Sotheby's may require in its absolute discretion as security for the bid. For any lots other than Premium Lots, regardless of the low pre-sale estimate for the lot, Sotheby's reserves the right to request from prospective bidders to complete the pre-registration application form and to deliver to Sotheby's a deposit of HK\$1,000,000 or such higher amount as may be determined by Sotheby's (for any items of Chinese Works of Art, Fine Chinese Paintings, Magnificent Jewels & Jadeite and Modern & Contemporary Art – Evening Sale) and of HK\$500,000 or such other higher amount as maybe determined by Sotheby's (for any items in other categories) and any financial references, guarantees and/or such other security as Sotheby's may require in its absolute discretion as security for the bid.

Pre-sale Estimates Pre-sale estimates are intended as a guide for prospective buyers. Any bid between the high and low pre-sale estimates would, in our opinion, offer a chance of success. However, all lots can realise prices above or below the pre-sale estimates. It is advisable to consult us nearer the time of sale as estimates can be subject to revision. The estimates printed in the auction catalogue do not include the buyer's premium.

Symbol Key The following key explains the symbols you may see inside this catalogue.

👉 Premium Lots

In order to bid on "Premium Lots" (👉 in print catalogue, 👈 in eCatalogue), Sotheby's may request from prospective bidders to complete the pre-registration application form and to

deliver to Sotheby's a deposit of HK\$5,000,000 or such other higher amount as may be determined by Sotheby's (for any items of Chinese Works of Art, Fine Chinese Paintings, Fine Classical Chinese Paintings, Magnificent Jewels & Jadeite and Modern & Contemporary Art – Evening Sale) and of HK\$2,000,000 or such other higher amount as may be determined by Sotheby's (for any items in other categories), and any financial references, guarantees and/or such other security as Sotheby's may require in its absolute discretion as security for the bid. If all lots in the catalogue are "Premium Lots", a Special Notice will be included to this effect and this symbol will not be used.

👈 Guaranteed Property

The seller of lots with this symbol has been guaranteed a minimum price from one auction or a series of auctions. This guarantee may be provided by Sotheby's, by a third party or jointly by Sotheby's and a third party. A guarantee may be in the form of an irrevocable bid provided by a third party. Third parties providing or participating in a guarantee may benefit financially if a guaranteed lot is sold successfully and may incur a loss if the sale is not successful. If every lot in a catalogue is guaranteed, the Important Notices in the sale catalogue will so state and this symbol will not be used for each lot. If a third party providing or participating in a guarantee is the successful bidder for the guaranteed lot, they will be required to pay the full Buyer's Premium.

👈 Property in which Sotheby's has an Ownership Interest

Lots with this symbol indicate that Sotheby's owns the lot in whole or in part or has an economic interest in the lot equivalent to an ownership interest. If all lots in the catalogue are lots in which Sotheby's has an ownership interest, a Special Notice will be included to this effect and the triangle symbol will not be used.

👈 Irrevocable Bids

Lots with this symbol indicate that a party has provided Sotheby's with an irrevocable bid on the lot that will be executed during the sale at a value that ensures that the lot will sell. The irrevocable bidder, who may bid in excess of the irrevocable bid, will be compensated based on the final hammer price in the event he or she is not the successful bidder. If the irrevocable bidder is the successful bidder, he or she will be required to pay the full Buyer's Premium and will not be otherwise compensated. If the irrevocable bid is not secured until after the printing of the auction catalogue, a pre-lot announcement will be made indicating that there is an irrevocable bid on the lot. If the irrevocable bidder is advising anyone with respect to the lot, Sotheby's requires the irrevocable bidder to disclose his or her financial interest in the lot. If an agent is advising you or bidding on your behalf with respect to a lot identified as being subject to an irrevocable bid, you should request that the agent disclose whether or not he or she has a financial interest in the lot.

👈 Interested Parties

Lots with this symbol indicate that parties with a direct or indirect interest in the lot may be bidding on the lot, including (i) the beneficiary of an estate selling the lot, or (ii) the joint owner of a lot. If the interested party is the successful bidder, they will be required to pay the full Buyer's Premium. In certain instances, interested parties may have knowledge of the reserve. In the event the

interested party's possible participation in the sale is not known until after the printing of the auction catalogue, a pre-lot announcement will be made indicating that interested parties may be bidding on the lot.

👈 No Reserve

Unless indicated by a box (👈), all lots in this catalogue are offered subject to a reserve. A reserve is the confidential hammer price established between Sotheby's and the seller and below which a lot will not be sold. The reserve is generally set at a percentage of the low estimate and will not exceed the low estimate for the lot. If any lots in the catalogue are offered without a reserve, these lots are indicated by a box (👈). If all lots in the catalogue are offered without a reserve, a Special Notice will be included to this effect and the box symbol will not be used.

👈 Restricted Materials

Lots with this symbol have been identified at the time of cataloguing as containing organic material which may be subject to restrictions regarding import or export. The information is made available for the convenience of Buyers and the absence of the Symbol is not a warranty that there are no restrictions regarding import or export of the Lot; Bidders should refer to Condition 10 of the Conditions of Business for Buyers. Please also refer to the section on Endangered Species in the information on Buying at Auction.

Condition of Lots Prospective buyers are encouraged to inspect the property at the pre-sale exhibitions. Solely as a convenience, Sotheby's may provide condition reports. The absence of reference to the condition of a lot in the catalogue description does not imply that the lot is free from faults or imperfections. Please refer to Condition 3 of the Conditions of Business for Buyers printed in this catalogue.

Electrical and Mechanical Goods All electrical and mechanical goods are sold on the basis of their decorative value only and should not be assumed to be operative. It is essential that prior to any intended use, the electrical system is checked and approved by a qualified electrician.

2. BIDDING IN THE SALE

Bidding at Auction Bids may be executed in person by paddle during the auction, in writing prior to the sale by telephone or by BID^{FORM}.

Auction speeds vary, but average between 50 and 120 lots per hour. The bidding steps are generally in increments of approximately 10% of the previous bid. Please refer to Conditions 5 and 6 of the Conditions of Business for Buyers printed in this catalogue.

Bidding in Person To bid in person, you will need to register for and collect a numbered paddle before the auction begins. Proof of identity will be required. If you have a Sotheby's Identification Card, it will facilitate the registration process. If you wish to register to bid on a Premium Lot, please see the paragraph above. Should you be the successful buyer of a lot, please ensure that your paddle can be seen by the auctioneer and that it is your number that is called out. Should there be any doubts as to price or buyer, please draw the auctioneer's attention to it immediately. All lots sold will be invoiced to the name and address in which the paddle has been registered and cannot be transferred to other names and addresses.

Please do not mislay your paddle; in the event of loss, inform the Sales Clerk immediately. At the end of the sale, please return your paddle to the registration desk.

Absentee Bids If you cannot attend the auction, we will be happy to execute written bids on your behalf. A bidding form can be found at the back of this catalogue. This service is free and confidential. Lots will always be bought as cheaply as is consistent with other bids, the reserves and Sotheby's commissions. In the event of identical bids, the earliest received will take precedence. Always indicate a "top limit" - the hammer price to which you would bid if you were attending the auction yourself. "Buy" and unlimited bids will not be accepted. Please refer to Condition 5 of the Conditions of Business for Buyers printed in this catalogue. Telephoned absentee bids must be confirmed before the sale by letter or fax. Fax number for bids only: (852) 2522 1063. To ensure a satisfactory service, please ensure that we receive your bids at least 24 hours before the sale.

Bidding by Telephone If you cannot attend the auction, it is possible to bid on the telephone on lots with a minimum low estimate of HK\$40,000. As the number of telephone lines is limited, it is necessary to make arrangements for this service 24 hours before the sale. We also suggest that you leave a maximum bid which we can execute on your behalf in the event we are unable to reach you by telephone. Multi-lingual staff are available to execute bids for you. Please refer to Condition 5 of the Conditions of Business for Buyers printed in this catalogue.

Online Bidding via BID[™] If you cannot attend the auction, it may be possible to bid online via BID[™] for selected sales. This service is free and confidential. For information about registering to bid via BID[™], please refer to sothebys.com. Bidders using the BID[™] service are subject to the Additional Terms and Conditions for Live Online Bidding via BID[™], which can be viewed at sothebys.com, as well as the Conditions of Business applicable to the sale. The BID[™] online bidding service is not available for premium lots.

Employee Bidding Sotheby's employees may bid only if the employee does not know the reserve and fully complies with Sotheby's internal rules governing employee bidding.

US Economic Sanctions The United States maintains economic and trade sanctions against targeted foreign countries, groups and organisations. US buyers will please note that US persons are generally prohibited from selling, buying or otherwise dealing with property belonging to members, residents, nationals or the governments of these countries, organisations or groups.

3. THE AUCTION

Conditions of Business The auction is governed by the Conditions of Business for Sellers and Buyers and the Authenticity Guarantee. These apply to all aspects of the relationship between Sotheby's and actual and prospective bidders and buyers. Anyone considering bidding in the auction should read them carefully. They may be amended by way of notices posted in the saleroom or by way of announcement made by the auctioneer.

Interested Parties Announcement In situations where a person who is allowed to bid on a lot has a direct or indirect interest in such lot, such as the beneficiary or executor

of an estate selling the lot, a joint owner of the lot, or a party providing or participating in a guarantee of the lot, Sotheby's will make an announcement in the sale room that interested parties may bid on the lot. In certain circumstances, interested parties may have knowledge of the reserves.

Consecutive and Responsive Bidding

The auctioneer may open the bidding on any lot by placing a bid on behalf of the seller. The auctioneer may further bid on behalf of the seller, up to the amount of the reserve, by placing consecutive or responsive bids for a lot. Please refer to Condition 6 of the Conditions of Business for Buyers printed in this catalogue.

4. AFTER THE AUCTION

Payment Payment is due in HKdollars immediately after the sale and may be made by the following methods: Cash, Banker's Draft, Travellers Cheque, Cheque, Wire Transfer and Credit Card (American Express, MasterCard, Union Pay & Visa). It is against Sotheby's general policy to accept single or multiple related payments in the form of cash or cash equivalents in excess of HK\$80,000. It is Sotheby's policy to request any new clients or buyers preferring to make a cash payment to provide proof of identity (by providing some form of government issued identification containing a photograph, such as a passport, identity card or driver's licence) and confirmation of permanent address. Thank you for your co-operation. Cheques and drafts should be made payable to Sotheby's Hong Kong Limited.

Although personal and company cheques drawn in HK dollars on Hong Kong banks are accepted, you are advised that property will not be released until such cheques have cleared unless you have a pre-arranged Cheque Acceptance Facility. Forms to facilitate this are available from the Finance Department in Hong Kong.

If you wish to pay for any purchase with your American Express, Mastercard, Union Pay or Visa, you must present the card in person to Sotheby's Hong Kong. All charges are subject to acceptance by Sotheby's and by American Express, Mastercard, Union Pay or Visa, as the case may be. In the case a charge is not approved, you will nevertheless be liable to Sotheby's for all sums incurred by you. Credit card purchases may not exceed HK\$1,000,000.

Please note that Sotheby's reserves the right to decline payments received from anyone other than the buyer of record and that clearance of such payments will be required. Please contact our Client Accounts Department if you have any questions concerning clearance.

Collection and Storage All items from this auction not collected from 5/F One Pacific Place by Wednesday 10 Jan 2018 6pm will be transferred to Helu-Trans (HK) Pte Ltd where they can be collected from Monday 15 Jan 2018 onwards. All items not collected within one month after the date of the auction will incur storage charge at the following rate: **Storage charge: HK\$1,200 per lot per month.**

To arrange shipping or collection, please contact:

Sale Administrator / Shipping Administrator

As printed in front of this catalogue

Lots will be released to you or your authorised representative when full and final payment

has been received by Sotheby's, appropriate photographic identification has been made, and a release note has been provided by Sotheby's (open Monday to Friday 9:30am - 6pm). Please refer to Condition 7 of the Condition of Business for Buyers printed in this catalogue.

Loss or Damage Buyers are reminded that Sotheby's accepts liability for loss or damage to lots for a maximum period of thirty (30) calendar days after the date of the auction. Please refer to Condition 7 of the Conditions of Business for Buyers printed in this catalogue.

Shipping Sotheby's Shipping Department can advise buyers on exporting and shipping property. Our office is open between the hours of 9.30am and 6.00pm and you can contact the Shipping advisor on the number set out in the front of this catalogue. Purchases will be despatched as soon as possible upon clearance from the Accounts department and receipt of your written despatch instructions and of any export licence or certificates that may be required. Despatch will be arranged at the buyer's expense. Sotheby's may receive a fee for its own account from the agent arranging the despatch. Estimates and information on all methods can be provided upon request and enquiries should be marked for the attention of Sotheby's Shipping Department and faxed to (852) 2523 6489.

Your shipper will include a quote for transit insurance. All shipments should be unpacked and checked on delivery and any discrepancies notified to the transit insurer or shipper immediately.

Export The export of any lot from Hong Kong or import into any other country may be subject to one or more export or import licences being granted. It is the buyer's responsibility to obtain any relevant export or import licence. The denial of any licence required or delay in obtaining such licence cannot justify the cancellation of the sale or any delay in making payment of the total amount due. Sotheby's, upon request and for an administrative fee, may apply for a licence to export your lot(s) outside Hong Kong. Sotheby's recommends that you retain all import and export papers, including licences, as in certain countries you may be required to produce them to governmental authorities.

Endangered Species Items made of or incorporating plant or animal material, such as rosewood, coral, crocodile, ivory, whalebone, tortoiseshell, etc., irrespective of age or value, may require a licence or certificate prior to exportation and require additional licences or certificates upon importation to any country outside Hong Kong. Please note that the ability to obtain an export licence or certificate does not ensure the ability to obtain an import licence or certificate in another country, and vice versa. For example, it is illegal to import African elephant ivory into the United States. Sotheby's suggests that buyers check with their own government regarding wildlife import requirements prior to placing a bid. It is the buyer's responsibility to obtain any export or import licences and/or certificates as well as any other required documentation (please refer to Condition 10 of the Conditions of Business for Buyers printed in this catalogue).

5. ADDITIONAL SERVICES

Financial Services Sotheby's offers a wide range of financial services including advances on consignments, as well as loans secured by art collections not intended for sale. This

is not an offer or solicitation and the services are subject to the laws and regulations of the jurisdictions in which the services are provided. For further information please contact Sotheby's Financial Services in Hong Kong at +852 2822 8188 or in London at +44 20 7293 6005.

Pre-sale Auction Estimates Sotheby's will be pleased to give preliminary pre-sale auction estimates for your property. This service is free of charge and is available from Sotheby's experts in Hong Kong on week days between 9.30am and 4.30pm. We advise you to make an appointment with the relevant expert department. Upon request, we may also travel to your home to provide preliminary pre-sale auction estimates.

Valuations The Valuation department provides written inventories and valuations for many purposes including insurance, probate and succession division, asset management and tax planning. Valuations can be tailored to suit most needs. Fees are highly competitive. For further information please contact the relevant Expert department on (852) 2524 8121, Fax (852) 2810 6238.

中國工藝品詞彙

以下為本圖錄內所使用的詞彙示例。請注意，所有陳述乃根據業務規則及保證書的條文作出。

1. 倘蘇富比認為某物品屬於某一期間、統治時期或朝代，則每件拍賣品的分類會以粗體字直接標示在圖錄條目的標題下方

例如：蘇富比會標示明朝嘉靖年間之青花盤如下：

明嘉靖年間青花盤

2. 如該拍賣品的標題中沒有以粗體字確認有關工藝品之分類，則表示無法確定該工藝品的所屬年代。

3. 倘某批拍賣品之標題有提供分類且該批拍賣品多於一件物品，除非另有指明，否則蘇富比認為該批拍賣品全部屬於以粗體字所標示的時期。

4. 倘物品並無分類，則蘇富比對其所屬期間存疑或認為其屬於 19 或 20 世紀。

5. 有關亞洲硬木，『黃花梨』、『花梨』、『紅木』、『紫檀』等在標題中以單引號加粗或大寫的術語均為基於外觀而做出的描述性鑑定，並非指某一特定科學物種。

重要通知

請注意，所有拍賣品均須按載於本圖錄背面之買家業務規則及保證書及賣家業務規則出售，有關業務規則及保證書可向蘇富比辦事處索取。準買家應查閱業務規則、保證書及給準買家之指引。然而，謹此提醒準買家，所有拍賣品均按本圖錄所載之買家業務規則第 3 條出售，務請垂注有關業務規則。保存狀況報告請參閱英文註解

象牙 本拍賣有部分拍品包含象牙，其出口及進口可能受到限制。此外，非洲象牙不能進口至美國。請參閱圖錄內「給準買家之指引」下的「瀕危物種」條目。另務請閣下細閱「買家之業務規則」第 10 條。

給準買家之指引

於拍賣會上購買 下文旨在給予閣下有關如何在拍賣會上購買之實用資料。於本圖錄前部份所列之蘇富比職員將樂意協助閣下。然而，閣下務須詳閱下列資料，並須注意蘇富

比乃為賣方行事；閣下尤其應查閱載於本圖錄之業務規則第3條及第4條。
準買家應參閱sothebys.com有關此圖錄的拍賣品之最新資料。

展品之出處 在某些情況下，若展品出處之資料擁有學術價值或是為人熟悉且能協助鑑別該展品，「蘇富比」會在圖錄內刊印有關資料。但基於不同理由，賣方或上手物主之身份或不會被揭露，如因賣方要求將其身份保密或因展品年代久遠以致上手物主之身份不詳等。

買家支付之酬金 買家應支付本公司酬金。拍賣品「成交價」為2,400,000港元或以上，酬金以「成交價」之25%計算；超過2,400,000港元至22,500,000港元之部份，則以20%計算；超過22,500,000港元之部份，則以12.9%計算。

1. 拍賣前

訂閱圖錄 閣下如欲訂閱圖錄，請致電(852) 2822 8142。

訂金 閣下有意競投目錄中(☞)或電子目錄中(☞)所載的拍賣品，蘇富比可要求閣下，就高估價拍賣品交付蘇富比港幣5,000,000元的訂金或其他更大金額的訂金（此適用於任何中國藝術品、中國書畫、中國古代書畫、瑰麗珠寶與翡翠首飾及現當代藝術晚間拍賣）及交付港幣2,000,000元或其他由蘇富比決定之更大金額的訂金（此適用於任何其他類別之拍賣品）及任何財務狀況證明、擔保或/及其他由蘇富比全權酌情決定要求的抵押作為參加蘇富比競投的保障。

除高估價拍賣品外之其他拍賣品，不論拍賣品估計之預售價為何，蘇富比有權要求準競投人填寫預先登記申請表及交付蘇富比港幣1,000,000元或其他由蘇富比決定之更大金額的訂金（此適用於任何中國藝術品、中國書畫、中國古代書畫、瑰麗珠寶與翡翠首飾及現當代藝術晚間拍賣）及交付港幣500,000元或其他由蘇富比決定之更大金額的訂金（此適用於任何其他類別之拍賣品）及任何財務狀況證明、擔保或/及其他由蘇富比全權酌情決定要求的抵押作為參加蘇富比競投的保障。

拍賣前估價 拍賣前估價用意在於為準買家提供指引。本公司認為，介乎拍賣前高位與低位估價間之任何競投價均有成功機會。然而，所有拍賣品之價格可能高於或低於拍賣前估價。由於估價可予修改，因此閣下應在臨臨拍賣時諮詢本公司。拍賣圖錄所載之估價並不包括買家支付之酬金。

符號表示

以下為本圖錄所載符號之說明：

☞ 高估價拍賣品

蘇富比可要求競投高估價拍賣品（在目錄內標有☞符號或網上目錄內標有☞符號）的準競投人完成預先登記程序及交付蘇富比港幣5,000,000元或其他由蘇富比決定之更大金額的訂金（此適用於任何中國藝術品、中國書畫、中國古代書畫、瑰麗珠寶與翡翠首飾及現當代藝術晚間拍賣）及交付港幣2,000,000元或其他由蘇富比決定之更大金額的訂金（此適用於任何其他類別之拍賣品）及任何財務狀況證明、擔保或/及其他由蘇富比可全權酌情決定要求的抵押作為參加蘇富比競投的保障。若在同一目錄中所有拍賣品均為高估價拍賣品，則會就此作出特別通知而不會使用此符號。

○ 保證項目 附上○符號之拍賣品表示賣家獲本公司保證可在一次或一連串拍賣中得到最低售價。此保證可由蘇富比、第三方或由蘇富比與第三方共同提供。保證可為由第三方提供之不可撤銷競投之形式作出。若成功售出保證拍賣品，提供或參與提供保證之第三方可能會取得財務利益，惟銷售不成功則可能會產生虧損。若在同一圖錄中之所有拍賣品均得到此保證，該保證會在本銷售圖錄

所載之重要指示中註明，而此符號將不會用於每一項拍賣品。若提供或參與保證之第三方成功競投保證項目，他們需支付全數買家支付之酬金。

△ 蘇富比擁有業權權益之拍賣品 附有△符號之拍賣品表示蘇富比擁有該拍賣品全部或部份之業權，或在拍賣品中擁有相等於業權權益之經濟利益。若在同一圖錄中之所有拍賣品均為蘇富比擁有業權權益，則會就此作出特別提示而不會使用此符號。

≡ 不可撤銷投標 附有此符號之拍賣品表示已有競投方就拍賣品向蘇富比做出不可撤銷投標的承諾。於拍賣進行時該投標將會以一確保拍賣品定能拍出的價格執行。

該不可撤銷競投方可以超過不可撤銷投標之價格競投。如該方競投不成功，該方將會得到已最後成交價作基準的補償。倘不可撤銷競投方競投成功，則須支付之酬金及不會得到任何其他報酬補償。倘不可撤銷投標於在拍賣圖錄印製後才接獲，一則示意該拍賣品有不可撤銷投標之公告將於該拍賣品競投前作出。

如不可撤銷競投方向何人士對拍賣品作出建議，蘇富比要求不可撤銷競投方必須向該人士披露己方與拍賣品有經濟利害關係。如有顧問建議閣下或代閣下競投有不可撤銷投標之拍賣品，閣下應要求該顧問披露是否與拍賣品有經濟利害關係。

∨ 有害關係的各方 附有∨符號之拍賣品表示對拍賣品有直接或間接利害關係的各方可能對拍賣品作出競投，包括(i)提供全部或部份保證的一方，(ii)出售拍賣品之遺產之受益人，或(iii)拍賣品之聯權共有者。倘有害關係的一方為成功競投人，他們須支付全部買家支付之酬金。在某些情況下，有害關係的各方可能知悉底價。倘在拍賣圖錄印製後才獲悉有利害關係的一方可能參與拍賣，一則示意有利害關係的各方可能對拍賣品作出競投之公告將於該拍賣品拍賣前作出。

□ 無底價 除以□符號另作註明外，所有在此圖錄之拍賣品均有底價。底價是由蘇富比和買家共同設定之成交價位，且絕對機密。拍賣品不會以低於該價售出。底價通常以低位估價之一定比例來設定，且拍賣品不會以低於該價位之售價成交。圖錄中之拍賣品如不設底價，均會以□符號註明。若在同一圖錄中之所有拍賣品均並非以底價出售，則會就此作出特別提示而不會使用此符號。

◎ 受限制物料

附有此符號之拍賣品於編制目錄時已識別為含有有機物料，而有機物料可能受到進出口之限制。有關資料為方便買家查閱，而無附有該符號並非保證該拍賣品並無進出口之限制。競投人應參閱買家之業務規則第10條，亦請參閱拍賣會購買資訊中有關瀕臨絕種物種一節。

拍賣品之狀況 準買家應於拍賣前之展覽會上視察拍賣品。純為方便買家，蘇富比亦會提供拍賣品狀況報告。如圖錄中未說明拍賣品之狀況，不表示該拍賣品沒有缺陷或瑕疵。請參閱印於本圖錄之買家業務規則第3條。

電器及機械貨品 所有電器及機械貨品只按其裝飾價值出售，不應假設其可運作。電器在作任何用途前必須經合格電器技師檢驗和批核。

2. 拍賣之競投

在拍賣會中競投 競投可以由個人親臨拍賣會上舉標進行，亦可在拍賣前以書面形式參加或通過電話或BIDSM網上競投服務進行競投。

拍賣過程需時各有不同，但平均為每小時50至120件拍賣品。每次出價通常較前一次出價高約10%。請參閱印於本圖錄之買家業務規則第5及6條。

親身競投 親身競投之人士須在拍賣會開始前登記及領取號碼板，並須出示身份證明文件。如閣下持有蘇富比卡則更有助登記程序之進行。如閣下希望登記競投高估價拍賣品，請參考上述段落。如閣下成功購得拍賣品，請確定拍賣官看到閣下之號碼板及叫出閣下之號碼。如對叫價或買家有任何疑問，請立即向拍賣官示意。所有售出之拍賣品發票抬頭人均會為登記號碼板之人士及其地址，而不得轉讓至他人及其他地址。請勿隨意放置閣下之號碼板；如有遺失，立即通知拍賣主任。拍賣完結時，請將號碼板交回登記席。

缺席競投 如閣下未能出席拍賣會，本公司樂意代表閣下進行書面競投。本圖錄後部分附有競投表格。此服務乃免費且保密。拍賣品將會以相對於其他競投價、底價及蘇富比委託標之最相宜價格得。倘競投價相同，則最先競投者有優先權。請每一次均列明「最高限價」一即閣下如親身出席拍賣會將會作出之成交價。「購買」和無限價競投標將不獲接納。請參閱本圖錄所載之買家業務規則第5條。電話競投者必須於拍賣前以函件或傳真確認。競投傳真專線號碼為：(852) 25221063。為確保獲得滿意之服務，請確保本公司在拍賣前最少24小時收到閣下確認競投之指示。

電話競投 如閣下未能出席拍賣會，可透過電話競投底位估價最低為40,000港元之拍賣品。由於電話線路有限，因此必須於拍賣前24小時安排此項服務。本公司亦建議閣下表明最高限價，以便當本公司不能以電話聯絡閣下時可代表閣下競投。本公司有多位通曉多國語言之職員可為閣下進行競投。請參閱本圖錄所載之買家業務規則第5條。

透過BIDSM網上競投服務進行網上競投 若閣下未能出席拍賣會，或可透過BIDSM網上競投服務於網上競投特定之拍賣。此項服務乃免費及保密。有關透過BIDSM網上競投服務登記進行網上競投之詳情，請參考蘇富比網頁www.sothebys.com。使用BIDSM網上競投服務之競投人受透過BIDSM網上競投服務進行即時網上競投之附加條款（可參閱蘇富比網頁www.sothebys.com），以及適用於該拍賣之業務規則所規限。

僱員競投 蘇富比之僱員只可在不知底價及全面遵守蘇富比監管僱員競投之內部規例之情況下於蘇富比拍賣會上競投。

美國經濟制裁 美國維持對目標海外國家、集團及組織之經濟及貿易制裁。美國買家務請注意，美國人士一般不得買賣或以其他方式處置該等國家、組織或集團之成員、居民、公民或政府擁有之物品。

3. 拍賣

業務規則 拍賣會受賣方及買家業務規則及真實性保證所規限。該等業務規則及保證適用於蘇富比與實際或準競投者及準買家之間之各方面之關係。任何考慮於拍賣會競投之人士，務須詳閱該等業務規則及保證。該等業務規則及保證可經在拍賣會場張貼通告或由拍賣官作出公佈之方式進行修改。

有利害關係各方之公告 倘獲准競投拍賣品之人士直接或間接擁有該拍賣品之權益，或為出售拍賣品之遺產受益人或執行人，或為拍賣品之共同擁有人，或提供或參與拍賣品擔保人士，蘇富比將會在拍賣會場發表公告表示有利害關係各方可能競投拍賣品。在某些情況下，有利害關係的各方可能知悉底價。

接連投標及競投 拍賣官可代表賣家為任何拍賣品叫第一口價以開始競投。拍賣官更可代表賣家以接連投標或競投之方式，就拍賣品作出競投直至達到底價。請參閱載於本圖錄之買家業務規則第6條。

4. 拍賣後

付款 拍賣後須即時以下列方法以港元付款：現金、銀行匯票、旅行支票、支票、電匯、信用卡（American Express, MasterCard, Union Pay & Visa）。

蘇富比之一般政策是不會以現金或現金等值形式接納逾80,000港元之一項或多項相關付款。蘇富比之政策是要求選擇以現金付款之任何新客戶或買家提供身份證明（通過出示帶有照片並由政府發出之證明，如護照、身份證或駕駛執照）並確認固定地址。多謝合作。支票及匯票請以蘇富比為抬頭人。雖然以香港銀行港元開出之個人及公司支票均獲接納，惟敬請留意，除非閣下已預先安排支票受納設施，否則本公司須待支票兌現後方會將閣下所購得之物品交付。如欲作出是項安排，請向位於香港之財務部索取表格辦理。若以信用卡（American Express, MasterCard, Union Pay & Visa）結賬，請親身持咭到本公司付款。本公司及信用卡公司保留是否接納該等付款之權利。如該等付款不被接納或撤回，閣下仍須承擔付款責任。信用卡付款之上限為1,000,000港元。請注意除記錄上的買家之外，蘇富比有權拒絕接納任何其他人仕的付款，而此等付款須先經過帳。如閣下就有關付款過帳有任何問題，請聯絡本公司之會計部。

收取及儲存貨品 是次拍賣之所有拍品如未能於2018年1月10日（星期三）下午6時前在太古廣場1期5樓提取，將會移存至喜龍（香港）有限公司。閣下可於2018年1月15日（星期一）開始提貨，拍賣後一個月若閣下尚未領取拍品，屆時須支付移存拍品之儲存費。儲存費計算方法如下：

儲存費：每件每月港幣1,200元。
如欲安排付運或收取貨品，請聯絡：
行政助理 / 運輸助理
列印於此圖錄之前部份

蘇富比收到全數結清之貨款，附有相片之身份證明文件，及蘇富比提供之領貨單，會將拍賣品交付予閣下或閣下所授權之代表。（辦公時間為星期一至五上午9時30分至下午6時）請預先致電以節省等候時間。請參閱載於本圖錄之買家業務規則第7條。

損失或損壞 買家應注意，蘇富比對拍賣品損失或損壞之責任期限最多為及至拍賣後三十（30）天。請參閱載於本圖錄之買家業務規則第7條。

付運 蘇富比裝運部可就拍賣品之出口及付運向買家提供意見。辦事處之辦公時間為上午九時三十分至下午六時，閣下可按載於圖錄前部分之電話號碼聯絡裝運顧問。已購物品將於會計部收到結清貨款後及取得閣下之書面付運指示及任何出口許可證或可能需要之證書後儘快付運。付運所需費用概由買家支付。蘇富比可從安排付運之代理人收取費用。如有要求，蘇富比可提供報價及所有運送方式之資料。如有垂詢，請聯絡蘇富比裝運部，並傳真至(852) 25236489。閣下之承運人將對運送保險作出報價。所有付運貨品交貨之時應打開包裝檢查，如有任何不符之處，請立即通知運送保險商或承運人。

出口 任何拍賣品都可能需要一個或多個許可證方可自香港出口或由其他國家進口。買家須負責取得任何有關之進出口許可證。即使未能取得任何許可證或延遲取得該許可證，均不能構成取消成交或任何延遲支付到期應付總額之理由。蘇富比可應要求領牌照，將閣下之拍賣品出口至香港境外，惟會就此收取行政費用。蘇富比建議閣下保留所有進出口文件（包括許可證）。在某些國家閣下可能須向政府當局出示此類文件。

瀕危物種 由植物或動物材料（如紅木、珊瑚、鱷魚、象牙、鯨骨、玳瑁等）製成或含有植物或動物材料之物品，不論其年份或價

值，均可能須申領許可證或證書方可出口至香港境外，且由香港境外國家進口時可能須申領其他許可證或證書。務請注意，能取得出口許可證或證書並不能確保可在另一國家取得進口許可證或證書，反之亦然。例如，進口非洲象牙至美國即屬非法。蘇富比建議買家向相關政府查核有關野生動植物進口之規定後再參與競投。買家須負責取得任何出口或進口許可證及/或證書，以及任何其他所需文件（請參閱載於本圖錄之買家業務規則第10條）。

5. 其他服務

財務服務 蘇富比向客戶提供多種財務服務，其中包括為委託提供預付款、及以不擬出售之藝術收藏品作為抵押之貸款。本文並不構成建議或要約。本文所述之服務均須受制於該服務地區之法律及法規司法管轄。有關進一步資料，請致電香港的蘇富比財務服務部，電話號碼是+852 2822 8188，或倫敦的蘇富比財務服務部，電話號碼是+44 20 7293 5273。

拍賣前估價 蘇富比樂意為閣下之物品提供拍賣前初步估價，此項免費服務由香港蘇富比之專家提供，服務時間為周一至周五上午九時三十分至下午四時三十分。本公司建議閣下與有關之專家部門作預約。如有所要求，本公司更會到府上為閣下之物品提供拍賣前初步估價。

估值 估值部門就保險、遺囑認證及承繼權劃分、資產管理及稅務方案需要提供物品之書面清單及估值。估值費用相宜，可因應不同要求而作出，並能切合大部份需要。如欲索取更多資料，請與有關之專家部門聯絡，電話號碼為(852) 2524 8121，傳真號碼為：(852) 2810 6238。

TAX INFORMATION FOR BUYERS

Buyers from outside Hong Kong should note that local sales taxes or use taxes may become payable upon import of items following purchase (for example, the Use Tax payable on import of purchased items to certain states of the USA).

Sotheby's is currently registered to collect USA sales tax in the states of California and New York. If the property is delivered into any of the states in which Sotheby's is registered, Sotheby's is required by law to collect and remit the appropriate sales tax in effect in the state where the property is delivered.

Buyers should obtain their own tax advice from their tax advisors in this regard.

買家稅務信息

香港以外之買家應注意，當進口購買品時，或須繳付當地之銷售稅或使用稅（例如進口購買品至美國並付運到某些州份時，所需繳付之銷售稅或使用稅）。

蘇富比現時已在美国加利福尼亞州及紐約州登記為美國銷售稅納稅人。根據有關法律，蘇富比付運購買品至已登記為美國銷售稅納稅人之州份時，必須徵收並繳交相關之稅項。

買家應自行向稅務顧問就此方面尋求稅務意見。

CONDITIONS OF BUSINESS

The nature of the relationship between Sotheby's, Sellers and Bidders and the terms on which Sotheby's (as auctioneer)

and Sellers contract with Bidders are set out below.

Bidders' attention is specifically drawn to Conditions 3 and 4 below, which require them to investigate lots prior to bidding and which contain specific limitations and exclusions of the legal liability of Sotheby's and Sellers. The limitations and exclusions relating to Sotheby's are consistent with its role as auctioneer of large quantities of goods of a wide variety and Bidders should pay particular attention to these Conditions.

1. INTRODUCTION

(a) Sotheby's and Sellers' contractual relationship with prospective Buyers is governed by:

- (i) these Conditions of Business;
- (ii) the Conditions of Business for Sellers displayed in the saleroom and which are available upon request from Sotheby's Hong Kong salerooms or by telephoning (852) 2524 8121;
- (iii) Sotheby's Authenticity Guarantee as printed in the sale catalogue;
- (iv) any additional notices and terms printed in the sale catalogue including the Guide for Prospective Buyers; and
- (v) in respect of online bidding via the internet, the BIDSM Conditions on the Sotheby's website, in each case as amended by any saleroom notice or auctioneer's announcement at the auction.

(b) As auctioneer, Sotheby's acts as agent for the Seller. A sale contract is made directly between the Seller and the Buyer. However, Sotheby's may own a lot (and in such circumstances acts in a principal capacity as Seller) and/or may have a legal, beneficial or financial interest in a lot as a secured creditor or otherwise.

2. COMMON TERMS

In these Conditions of Business:

Bidder is any person considering, making or attempting to make a bid, by whatever means, and includes Buyers;

Buyer is the person who makes the highest bid or offer accepted by the auctioneer, and includes such person's principal when bidding as agent;

Buyer's Expenses are any costs or expenses due to Sotheby's from the Buyer;

Buyer's Premium is the commission payable by the Buyer on the Hammer Price at the rates set out in the Guide for Prospective Buyers;

Counterfeit is as defined in Sotheby's Authenticity Guarantee;

Hammer Price is the highest bid accepted by the auctioneer by the fall of the hammer, (in the case of wine, as apportioned pro-rata by reference to the number of separately identified items in that lot), or in the case of a post-auction sale, the agreed sale price;

Purchase Price is the Hammer Price and applicable Buyer's Premium;

Reserve is the (confidential) minimum Hammer Price at which the Seller has agreed to sell a lot;

Seller is the person offering a lot for sale (including their agent (other than Sotheby's), executors or personal representatives);

Sotheby's means Sotheby's Hong Kong Ltd., which has its registered office at Level 54, Hopewell Centre, 183 Queen's Road East, Hong Kong;

Sotheby's Company means Sotheby's in the USA and any of its subsidiaries (including Sotheby's) and Sotheby's Diamonds SA and

its subsidiaries (in each case 'subsidiary' having the meaning of Section 2 of the Companies Ordinance Cap.32).

3. DUTIES OF BIDDERS AND OF SOTHEBY'S IN RESPECT OF ITEMS FOR SALE

(a) Sotheby's knowledge in relation to each lot is partially dependent on information provided to it by the Seller, and Sotheby's is not able to and does not carry out exhaustive due diligence on each lot. Bidders acknowledge this fact and accept responsibility for carrying out inspections and investigations to satisfy themselves as to the lots in which they may be interested.

(b) Each lot offered for sale at Sotheby's is available for inspection by Bidders prior to the sale. Sotheby's accepts bids on lots solely on the basis that Bidders (and independent experts on their behalf, to the extent appropriate given the nature and value of the lot and the Bidder's own expertise) have fully inspected the lot prior to bidding and have satisfied themselves as to both the condition of the lot and the accuracy of its description.

(c) Bidders acknowledge that many lots are of an age and type which means that they are not in perfect condition. All lots are offered for sale in the condition they are in at the time of the auction (whether or not Bidders are in attendance at the auction). Condition reports may be available to assist when inspecting lots. Catalogue descriptions and condition reports may on occasions make reference to particular imperfections of a lot, but Bidders should note that lots may have other faults not expressly referred to in the catalogue or condition report. Illustrations are for identification purposes only and will not convey full information as to the actual condition of lots.

(d) Information provided to Bidders in respect of any lot, including any estimate, whether written or oral and including information in any catalogue, condition or other report, commentary or valuation, is not a representation of fact but rather is a statement of opinion genuinely held by Sotheby's. Any estimate may not be relied on as a prediction of the selling price or value of the lot and may be revised from time to time in Sotheby's absolute discretion.

(e) No representations or warranties are made by Sotheby's or the Seller as to whether any lot is subject to copyright or whether the Buyer acquires copyright in any lot.

(f) Subject to the matters referred to at 3(a) to 3(e) above and to the specific exclusions contained at Condition 4 below, Sotheby's shall exercise such reasonable care when making express statements in catalogue descriptions or condition reports as is consistent with its role as auctioneer of lots in the sale to which these Conditions relate, and in the light of

- (i) the information provided to it by the Seller;
- (ii) scholarship and technical knowledge; and
- (iii) the generally accepted opinions of relevant experts, in each case at the time any such express statement is made.

4. EXCLUSIONS AND LIMITATIONS OF LIABILITY TO BUYERS

(a) Sotheby's shall refund the Purchase Price to the Buyer in circumstances where it deems that the lot is a Counterfeit and each of the conditions of the Authenticity Guarantee has been satisfied.

(b) In the light of the matters in Condition 3 above and subject to Conditions 4(a) and 4(e), neither any Sotheby's Company nor the Seller:

- (i) is liable for any errors or omissions in information provided to Bidders by Sotheby's (or any Sotheby's Company), whether orally or in writing, whether negligent or otherwise, except as set out in Condition 3(f) above;
- (ii) gives any guarantee or warranty to Bidders and any implied warranties and conditions are excluded (save in so far as such obligations cannot be excluded by law) other than the express warranties given by the Seller to the Buyer in Condition 2 of the Sellers' Conditions of Business;
- (iii) accepts responsibility to any Bidders in respect of acts or omissions (whether negligent or otherwise) by Sotheby's in connection with the conduct of auctions or for any matter relating to the sale of any lot.

(c) Unless Sotheby's owns a lot offered for sale, it is not responsible for any breach of these conditions by the Seller.

(d) Without prejudice to Condition 4(b), any claim against Sotheby's or the Seller by a Bidder is limited to the Purchase Price with regard to that lot. Neither Sotheby's nor the Seller shall under any circumstances be liable for any consequential losses.

(e) None of this Condition 4 shall exclude or limit Sotheby's liability in respect of any fraudulent misrepresentation made by Sotheby's or the Seller, or in respect of death or personal injury caused by the negligent acts or omissions of Sotheby's or the Seller.

5. BIDDING AT AUCTION

(a) Sotheby's has absolute discretion to refuse admission to the auction. Bidders must complete a Paddle Registration Form and supply such information and references as required by Sotheby's. Bidders act as principal unless they have Sotheby's prior written consent to bid as agent for another party. Bidders are personally liable for their bid and are jointly and severally liable with their principal if bidding as agent.

(b) Sotheby's advises Bidders to attend the auction but will seek to carry out absentee written bids which are in Hong Kong dollars and, in Sotheby's opinion, clear and received sufficiently in advance of the sale of the lot, endeavouring to ensure that the first received of identical written bids has priority.

(c) Where available, written, telephone and internet bids are offered as an additional service for no extra charge, at the Bidder's risk and shall be undertaken with reasonable care subject to Sotheby's other commitments at the time of the auction; Sotheby's therefore cannot accept liability for failure to place such bids save where such failure is unreasonable. Telephone and internet bids may be recorded. Internet bids ("BIDSM") are made subject to the BIDSM Conditions available on the Sotheby's website or upon request. The BIDSM Conditions apply in relation to online bids, in addition to these Conditions of Business.

6. CONDUCT OF THE AUCTION

(a) Unless otherwise specified, all lots are offered subject to a Reserve, which shall be no higher than the low presale estimate at the time of the auction.

(b) The auctioneer has absolute discretion at any time to refuse or accept any bid, withdraw any lot, re-offer a lot for sale (including after the fall of the hammer), and take such other action as he reasonably thinks fit.

(c) The auctioneer will commence and advance the bidding at levels and in increments he considers appropriate and is entitled to place a bid or series of bids on behalf of the Seller up to the Reserve on the lot, without indicating he is doing so and whether or not other bids are placed.

(d) Subject to Condition 6(b), the contract between the Buyer and the Seller is concluded on the striking of the auctioneer's hammer, whereupon the Buyer becomes liable to pay the Purchase Price.

(e) Any post-auction sale of lots offered at auction shall incorporate these Conditions as if sold in the auction.

7. PAYMENT AND COLLECTION

(a) Unless otherwise agreed, payment of the Purchase Price for a lot and any Buyer's Expenses are due in Hong Kong dollars immediately on conclusion of the auction (the "Due Date") notwithstanding any requirements for export, import or other permits for such lot.

(b) Title in a purchased lot will not pass until Sotheby's has received the Purchase Price and Buyer's Expenses for that lot in cleared funds. Sotheby's is not obliged to release a lot to the Buyer until title in the lot has passed and appropriate identification has been provided, and any earlier release does not affect the passing of title or the Buyer's unconditional obligation to pay the Purchase Price and Buyer's Expenses.

(c) The Buyer is obliged to arrange collection of purchased lots no later than thirty (30) calendar days after the date of the auction. Purchased lots are at the Buyer's risk (and therefore their sole responsibility for insurance) from the earliest of

- (i) collection or
- (ii) the thirty-first calendar day after the auction. Until risk passes, Sotheby's will compensate the Buyer for any loss or damage to the lot up to a maximum of the Purchase Price paid. Buyers should note that Sotheby's assumption of liability for loss or damage is subject to the exclusions set out in Condition 6 of the Conditions of Business for Sellers.

8. REMEDIES FOR NON-PAYMENT

Without prejudice to any rights the Seller may have, if the Buyer without prior agreement fails to make payment in full for the lot within five days of the auction, or in accordance with any payment schedule agreed with Sotheby's, Sotheby's may in its sole discretion (having informed the Seller) exercise one or more of the following remedies:

(a) store the lot at its premises or elsewhere at the Buyer's sole risk and expense;

(b) terminate the contract of the sale of the lot, retaining the right to damages for the Buyer's breach of contract;

(c) set off any amounts owed to the Buyer by a Sotheby's Company against any amounts owed to Sotheby's by the Buyer in respect of the lot and/or any shortfall in the Purchase Price and Buyer's Expenses in the event of a resale under Condition 8(h) below (on a pro-rata basis where more than one lot is purchased by the Buyer at the auction and is then resold), and/or any claim by Sotheby's against the Buyer for damages for the Buyer's breach of contract (including but not limited to the Buyer's Premium in the event of a termination of the sale contract);

(d) apply as Sotheby's sees fit any payments, including deposits, made by or on behalf of the Buyer in respect of this transaction or otherwise, towards (i) any costs, Buyer's Expenses or debts owed by the Buyer to any Sotheby's Company, and/or (ii) any shortfall in the Purchase Price and Buyer's Expenses in the event of a resale under Condition 8(h) below (on a pro-rata basis where more than one lot is purchased by the Buyer at the auction and is then resold), and/or (iii) any claim by Sotheby's against the Buyer for damages for the Buyer's breach of contract (including but not limited to the Buyer's Premium in the event of a termination of the sale contract). For the avoidance of doubt, if more than one lot is purchased by the Buyer at the auction and the Buyer makes a partial payment but fails to pay in full the Purchase Price of all lots purchased by him within five days of the auction or in accordance with any payment schedule agreed with Sotheby's, Sotheby's is entitled, at its absolute discretion, to reject any instruction or request that the whole or a part of such partial payment be applied towards the Purchase Price of, and/or the shortfall and/or Sotheby's claim for damages in respect of, any particular lot(s) purchased by the Buyer;

(e) reject future bids from the Buyer or render such bids subject to payment of a deposit; such deposit to be applied at Sotheby's discretion in the event of subsequent non-payment or late payment;

(f) charge interest at a rate not exceeding 2% per month from the Due Date to the date the Purchase Price and relevant Buyer's Expenses are received in cleared funds;

(g) exercise a lien over any of the Buyer's property which is in the possession of a Sotheby's Company. Sotheby's shall inform the Buyer of the exercise of any such lien and within 14 days of such notice may arrange the sale of such property and apply the proceeds to the amount owed to Sotheby's, and/or any shortfall in the Purchase Price and Buyer's Expenses in the event of a resale under Condition 8(h) below (on a pro-rata basis where more than one lot is purchased by the Buyer at the auction and is then resold), and/or any claim by Sotheby's against the Buyer for damages for the Buyer's breach of contract (including but not limited to the Buyer's Premium in the event of a termination of the sale contract);

(h) resell the lot by auction or private sale, with estimates and reserves at Sotheby's discretion. In the event such resale is for less than the Purchase Price and Buyer's Expenses for that lot, the Buyer will remain liable for the shortfall together with all costs incurred in such resale;

(i) commence legal proceedings to recover the Purchase Price and Buyer's Expenses for that lot, or to claim damages for the Buyer's breach of contract, together with interest and the costs of such proceedings on a full indemnity basis; or

(j) release the name and address of the Buyer to the Seller to enable the Seller to commence legal proceedings to recover the amounts due or claim damages for the Buyer's breach of contract and legal costs. Sotheby's will take reasonable steps to notify the Buyer prior to releasing such details to the Seller.

9. FAILURE TO COLLECT PURCHASES

(a) If the Buyer pays the Purchase Price and Buyer's Expenses but fails to collect a purchased lot within thirty calendar days of the auction, the lot will be stored at the Buyer's expense (and risk) at Sotheby's or with a third party.

(b) If a purchased lot is paid for but not collected within six months of the auction, the Buyer authorises Sotheby's, having given notice to the Buyer, to arrange a resale of the item by auction or private sale, with estimates and reserves at Sotheby's discretion. The proceeds of such sale, less all costs incurred by Sotheby's, will be forfeited unless collected by the Buyer within two years of the original auction.

10. EXPORT AND PERMITS

It is the Buyer's sole responsibility to identify and obtain any necessary export, import, firearm, endangered species or other permit for the lot and to complete any required export or import manifest, list or documentation. Any symbols or notices in the sale catalogue reflect Sotheby's reasonable opinion at the time of cataloguing and offer Bidders general guidance only. Without prejudice to Conditions 3 and 4 above, Sotheby's and the Seller make no representations or warranties as to whether any lot is or is not subject to export or import restrictions or any embargoes. The denial of any permit or licence shall not justify cancellation or rescission of the sale contract or any delay in payment. We shall not be responsible for any liability arising from any failure to complete or submit the required export or import manifest, list or documentation.

11. GENERAL

(a) All images and other materials produced for the auction are the copyright of Sotheby's, for use at Sotheby's discretion.

(b) Notices to Sotheby's should be in writing and addressed to the department in charge of the sale, quoting the reference number specified at the beginning of the sale catalogue. Notices to Sotheby's clients shall be addressed to the last address formally notified by them to Sotheby's.

(c) Should any provision of these Conditions of Business be held unenforceable for any reason, the remaining provisions shall remain in full force and effect.

(d) These Conditions of Business are not assignable by any Buyer without Sotheby's prior written consent, but are binding on Buyers' successors, assigns and representatives. No act, omission or delay by Sotheby's shall be deemed a waiver or release of any of its rights.

(e) The materials listed in Condition 1(a) above set out the entire agreement and understanding between the parties with respect to the subject matter hereof. It is agreed that, save in respect of liability for fraudulent misrepresentation, no party has entered into any contract pursuant to these terms in reliance on any representation, warranty or undertaking which is not expressly referred to in such materials.

12. DATA PROTECTION

In connection with the management and operation of our business and the marketing and supply of Sotheby's Companies' services, or as required by law, we may ask clients to provide personal information about themselves or obtain information about clients from third parties (e.g. credit information). If clients provide Sotheby's with information that is defined by law as "sensitive", they agree that Sotheby's Companies may use it for the above purposes. Sotheby's Companies will not use or process sensitive information for any other purpose without the client's express consent.

If you would like further information on Sotheby's policies on personal data, or to make corrections to your information, please contact us on (852) 2524 8121.

If you would prefer not to receive details of future events please tick here.

In order to fulfil the services clients have requested, Sotheby's may disclose information to third parties (e.g. shippers). Some countries do not offer equivalent legal protection of personal information to that offered within Hong Kong. It is Sotheby's policy to require that any such third parties respect the privacy and confidentiality of our clients' information and provide the same level of protection for clients' information as provided within Hong Kong, whether or not they are located in a country that offers equivalent legal protection of personal information. By agreeing to these Conditions of Business, clients agree to such disclosure.

Clients will please note that for security purposes, Sotheby's premises are subject to video recording. Telephone calls e.g. telephone and internet bidding/voicemail messages may also be recorded.

13. LAW AND JURISDICTION

Governing Law These Conditions of Business and all aspects of all matters, transactions or disputes to which they relate or apply shall be governed by and interpreted in accordance with Hong Kong law.

Jurisdiction For the benefit of Sotheby's, all Bidders and Sellers agree that the Hong Kong Courts are to have exclusive jurisdiction to settle all disputes arising in connection with all aspects of all matters or transactions to which these Conditions of Business relate or apply. All parties agree that Sotheby's shall retain the right to bring proceedings in any court other than the Hong Kong Courts.

Service of Process All Bidders and Sellers irrevocably consent to service of process or any other documents in connection with proceedings in any court by facsimile transmission, personal service, delivery by mail or in any other manner permitted by Hong Kong law, the law of the place of service or the law of the jurisdiction where proceedings are instituted, at the last address of the Buyer or Seller known to Sotheby's or any other usual address.

General Authenticity Guarantee:

If Sotheby's sells an item which subsequently is shown to be a "counterfeit", subject to the terms below Sotheby's will set aside the sale and refund to the Buyer the total amount paid by the Buyer to Sotheby's for the item, in the currency of the original sale.

For these purposes, "counterfeit" means a lot that in Sotheby's reasonable opinion is an imitation created to deceive as to authorship, origin, date, age, period, culture or source, where the correct description of such matters is not reflected by the description in the catalogue (taking into account any Glossary of Terms). No lot shall be considered a counterfeit by reason only of any damage and/or restoration and/or modification work of any kind (including repainting or over-painting).

Please note that this Guarantee does not apply if either:-

(i) the catalogue description was in accordance with the generally accepted opinions of scholar(s) and expert(s) at the date of the sale, or the catalogue description indicated that there was a conflict of such opinions; or

(ii) the only method of establishing at the date of the sale that the item was a counterfeit would have been by means of processes not then generally available or accepted, unreasonably expensive or impractical to use; or likely to have caused damage to the lot or likely (in Sotheby's reasonable opinion) to have caused loss of value to the lot; or

(iii) there has been no material loss in value of the lot from its value had it been in accordance with its description.

This Guarantee is provided for a period of five (5) years after the date of the relevant auction, is solely for the benefit of the Buyer and may not be transferred to any third party. To be able to claim under this Guarantee, the Buyer must:-

(i) notify Sotheby's in writing within three (3) months of receiving any information that causes the Buyer to question the authenticity or attribution of the item, specifying the lot number, date of the auction at which it was purchased and the reasons why it is thought to be counterfeit; and

(ii) return the item to Sotheby's in the same condition as at the date of sale to the Buyer and be able to transfer good title in the item, free from any third party claims arising after the date of the sale.

Sotheby's has discretion to waive any of the above requirements. Sotheby's may require the Buyer to obtain at the Buyer's cost the reports of two independent and recognised experts in the field, mutually acceptable to Sotheby's and the Buyer. Sotheby's shall not be bound by any reports produced by the Buyer, and reserves the right to seek additional expert advice at its own expense. In the event Sotheby's decides to rescind the sale under this Guarantee, it may refund to the Buyer the reasonable costs of up to two mutually approved independent expert reports.

蘇富比之香港業務規則

買家之業務規則

蘇富比、賣家及競投人之關係性質及蘇富比(作為拍賣官)及賣家與競投人所訂立合約之條款於下文載列。

競投人務請細閱下文規則第3及4條,該兩條要求競投人在投標前檢查拍賣品,並闡述了蘇富比及賣家之法律責任之具體限制及豁免。有關蘇富比所持有之限制及豁免符合其作為大量不同種類貨品拍賣官之身份,競投人應特別注意該等規則。

1. 序言

(a) 蘇富比及賣家與準買家之合約關係受下列各項規管:

- (i) 本業務規則;
 - (ii) 賣家在銷售處展示之業務規則(可於蘇富比之香港銷售處或致電(852) 2524 8121 索取);
 - (iii) 銷售目錄所載之蘇富比保證書;及
 - (iv) 銷售目錄所載之任何附加通知及條款,包括「給準買家指引」;
 - (v) 就透過互聯網進行網上競投而言,蘇富比網頁之BIDSM網上競投服務規則。
- 在各情況下按任何銷售通知或拍賣官於拍賣時所公佈所修訂。

(b) 蘇富比作為拍賣官,以賣家之代理身份行事。買家及買家直接訂立銷售合約。然而,蘇富比可能擁有拍賣品(及在該情況下以委託人之身份作為賣家行事)及/或可能以抵押債權人或其他身份擁有拍賣品之法律、實益或財務利益。

2. 一般條款

於本業務規則:

「競投人」指以任何方式考慮、作出或嘗試競投之任何人士,包括買家在內;

「買家」指拍賣官所接納最高競投價或要約之人士,包括以代理人身份競投之人士之委託人;

「買家之費用」指買家應向蘇富比支付之任何成本或費用;

「買家支付之酬金」指根據準買家指引所載費率買家按成交價應付之佣金;

「贖品」指蘇富比保證書所定之涵義;

「成交價」指拍賣官以擊槌接納之最高競投價;(倘為葡萄酒,則參考該批拍賣品內可個別識別之物品數目按合適比例);或倘為拍賣後銷售,則為協定出售價;

「買入價」指成交價及合適之買家支付之酬金;

「底價」指賣家同意出售拍賣品之最低成交價(保密);

「賣家」指提供拍賣品出售之人士(包括其代理人(不計蘇富比在內)、遺囑執行人或遺產代理人);

「蘇富比」指Sotheby's Hong Kong Ltd.,其註冊辦事處位於香港皇后大道東183號合和中心54樓;

「蘇富比公司」指於美國的蘇富比;其任何附屬公司(包括蘇富比);Sotheby's Diamonds SA及其任何附屬公司(定義見公司條例第32章第2節)。

3. 競投人及蘇富比有關出售物品之責任

(a) 蘇富比對各拍賣品之認識部份依賴賣家向其提供之資料,蘇富比無法及不會就各拍賣品進行全面盡職審查。競投人知悉此事,並承擔檢查及檢驗之責任,以使彼等滿意彼等可能感興趣之拍賣品。

(b) 蘇富比提出出售之各拍賣品於出售前可供競投人檢查。在競投人(鑑於有關拍賣品之性質及價值及競投人之專業知識而言屬合適者,以及代表彼等之獨立專家)已當作在投標前全面檢驗拍賣品,並滿意拍賣品之狀況及其描述之準確性,蘇富比方會接受競投人對拍賣品之投標。

(c) 競投人確認眾多拍賣品年代久遠及種類特殊,意味拍賣品並非完好無缺。所有拍賣品均以拍賣時之狀態出售(無論競投人是否出席拍賣)。狀況報告或可於檢查拍賣品時

提供。目錄描述及狀況報告在若干情況下可用作拍賣品某些瑕疵之參考,然而,競投人應注意,拍賣品可能存在其他在目錄或狀況報告內並無明確指出之瑕疵。解說只供鑑定用途,將不會當作拍賣品真實狀況之全部資料。

(d) 提供予競投人有關於何拍賣品之資料包括任何預測資料(無論為書面或口述)及包括任何目錄所載之資料、規則或其他報告、評論或估值,該等資料並非事實之陳述,而是蘇富比所持有之確實意見之聲明,故不應依賴任何預測作為拍賣品售價或價值之預測,且該等資料可由蘇富比不時全權酌情決定修改。

(e) 蘇富比或賣家概無就任何拍賣品是否受任何版權所限或買家是否已購買任何拍賣品之版權發出任何聲明或保證。

(f) 受上文規則第3(a)至3(e)條所載事項及下文規則第4條所載特定豁免所規限,蘇富比在目錄描述或狀況報告作出之明示聲明,應以該等規則有關之出售中所有拍賣品之拍賣官身份相符合之合理審慎態度作出;及基於(i)買家向其提供之資料;(ii)學術及技術知識;及(iii)相關專家普遍接納之意見作出之明示聲明,在各情況下應以合理審慎態度作出明示。

4. 對買家之責任豁免及限制

(a) 倘蘇富比視拍賣品為贖品並符合保證書內之各條件,將退回買入價予買家。

(b) 就上文規則第3條之事項而言及受規則第4(a)及4(e)條所規限,蘇富比或賣家均毋須:

(i) 對蘇富比(或任何蘇富比公司)向競投人以口述或書面提供之資料之任何錯誤或遺漏負責,無論是由於疏忽或因其他原因引致,惟上文規則第3(f)條所載者則除外;

(ii) 向競投人作出任何擔保或保證,於賣家之業務規則第2條中賣家向買家作出之明示保證以外之任何暗示保證及規則則不包括在內(惟法律規定不可免除之該等責任除外);

(iii) 就蘇富比有關拍賣或有關出售任何拍賣品之任何事宜之行動或遺漏(無論是由於疏忽或其他原因引致)向任何競投人負責。

(c) 除非蘇富比擁有出售之拍賣品,否則毋須就賣家違反該等規則而負責。

(d) 在不影響規則第4(b)條之情況下,競投人向蘇富比或賣家提出之任何索賠以該拍賣品之買入價為限。蘇富比或賣家在任何情況下均毋須承擔任何相因而產生的損失。

(e) 規則第4條概無免除或限制蘇富比有關蘇富比或賣家作出之任何具欺詐成份之失實聲明,或有關蘇富比或賣家之疏忽行為或遺漏而導致之人身傷亡之責任。

5. 拍賣會上競投出價

(a) 蘇富比可全權酌情決定拒絕參與拍賣。競投人必須填妥競投登記表格,並提供蘇富比所需資料及參考。除獲蘇富比書面同意以主事人代表身份出價,否則競投人必須以主事人身份行動。競投人親自負責出價,倘為代理,則視作共同及分別為其主事人負責。

(b) 蘇富比建議競投人出席拍賣會,但將尋求進行缺席者以港元作出之書面出價競投,而蘇富比認為,有關款項在出售拍賣品前已預先付清,以確保首先接收之書面競投享有優先權。

(c) 如有提供,可免費提供書面、電話及網上競投之附加服務,惟風險由競投人承擔,而該等服務會在蘇富比於拍賣時其他承諾之規限下,以合理審慎態度提供;因此,除非

不合理地未能作出該競投,否則蘇富比毋須就未能作出該競投承擔責任。電話及網上競投可能會被紀錄。網上競投(BIDSM)受BIDSM網上競投服務規則(可瀏覽蘇富比網頁或要求索取)所規限。BIDSM網上競投服務規則連同業務規則適用於網上競投。

6. 拍賣之行動

(a) 除另有訂明外,否則所有拍賣品均以底價出售,該價格不得高於拍賣時估計之預售低價。

(b) 拍賣官可隨時絕對酌情決定拒絕或接受任何競投,撤回任何拍賣品、重新出售拍賣品(包括在擊槌後),以及採取其合理地認為是合適之其他行動。

(c) 拍賣官會在彼認為合適之水平及增幅下開始及進行競投,並有權代表賣家作出競投或一連串競投,惟以底價為限,而毋須表示彼正進行該等行動及是否已作出其他競投。

(d) 受規則第6(b)條所限,買家及賣家之合約於拍賣官擊槌時訂立,據此買家須支付買入價。

(e) 於拍賣會後出售任何在拍賣會上發售之拍賣品時應包括該等規則,猶如已在拍賣會出售一樣。

7. 付款及領取

(a) 除非另有協定,否則不論拍賣品之出口、進口或其他許可證之任何規定為何,均必須於拍賣會結束(「到期日」)後立即以港元支付拍賣品之買入價及任何買家之費用。

(b) 所購拍賣品之擁有權將於蘇富比悉數收取買入價及買家之費用後方可轉移。蘇富比概無責任將拍賣品交給買家直至拍賣品之擁有權已轉移,且已獲提供適當確認而提早交付不會影響擁有權之轉移或買家支付買入價及買家之費用之無條件責任。

(c) 買家有責任安排在拍賣會後不少於三十天內領取已購買之拍賣品。已買之拍賣品由(i)領取;或(ii)拍賣會後第三十一天(以較早日期為準)起之風險由買家承擔(因此,由彼等自行負責投保)。直到風險轉移,蘇富比將就拍賣品之任何損失或損毀向買家支付賠償,惟以所付之買入價為最高限額。買家應注意,蘇富比對損失或損毀責任之承擔須受賣家之業務規則第6條所載之豁免情況所限。

8. 欠繳款之補償方法

在不影響買家可能擁有之任何權利之情況下,倘買家在未預先協定之情況下未能在拍賣會後五天內或未能按照與蘇富比協定之任何付款安排就拍賣品支付全數款項,蘇富比可全權決定(在已知會賣家之情況下)行使以下一項或多項補救方法:

(a) 將拍賣品貯存在其處所或其他地方,風險及費用完全由買家承擔;

(b) 終止拍賣品之買賣合約,並就買家違約保留追究損害賠償之權利;

(c) 以蘇富比公司結欠買家之任何金額抵銷買家就拍賣品結欠蘇富比之任何金額,及/或抵銷拍賣品根據以下規則第8(h)條重售時買入價及買家之費用之任何差額(倘多於一項拍賣品由買家於拍賣會中買入並其後被重售,則按比例計算),及/或抵銷蘇富比就買家違約對買家提出之任何損害賠償申索(包括但不限於在終止買賣合約之情況下買家支付之酬金);

(d) 按蘇富比認為合適將買家或買家透過代表就本交易或在其他情況下支付之任何款項(包括訂金)用以支付(i)買家結欠任何蘇富

比公司之任何成本、買家之費用或債務，及/或(ii)拍賣品根據以下規則第8(h)條重售時買入價及買家之費用之任何差額(倘多於一項拍賣品由買家於拍賣會中買入並其後被重售，則按比例計算)，及/或(iii)蘇富比就買家違約對買家提出之任何損害賠償申索(包括但不限於在終止買賣合約之情況下買家支付之罰金)。為避免疑問，倘買家於拍賣會中買入多於一項拍賣品並已支付部分款項，惟未能在拍賣會後五天內或未能按照與蘇富比協定之任何付款安排就其買入之所有拍賣品悉數支付買入價，蘇富比有權絕對酌情決定拒絕有關將上述部分付款之全部或部分用以支付買家買入任何特定拍賣品之買入價，及/或差價及/或蘇富比所提出之損害賠償申索之任何指示或請求：

(e) 拒絕買家未來作出之競投或使其就未來之競投項支付訂金，該訂金在買家隨後拒絕付款或延期付款時，蘇富比有權自行處理；

(f) 收取由到期日至悉數收取買入價及有關買家之費用當日期間按不超過每月2%之利率計算之利息；

(g) 對買家由蘇富比公司管有之任何物品行使留置權。蘇富比於行使任何此等留置權時應知會買家，並在發出該通知之十四天內可安排出售該物品，以及將所得款項用以支付結欠蘇富比之金額，及或拍賣品根據以下規則第8(h)條重售時買入價及買家之費用之任何差額(倘多於一項拍賣品由買家於拍賣會中買入並其後被重售，則按比例計算)，及/或蘇富比就買家違約對買家提出之任何損害賠償申索(包括但不限於在終止買賣合約之情況下買家支付之罰金)；

(h) 透過拍賣或私人出售重售拍賣品，並由蘇富比酌情決定預測價格及底價。倘該重售之價格低於該拍賣品之買入價及買家之費用，買家將仍須承擔該差額，連同該重售產生之所有費用；

(i) 展開法律訴訟，以收回該拍賣品之買入價及買家之費用，或就買家違約申索損害賠償，連同利息及完全彌償基準上該訴訟之費用；或

(j) 向賣家透露買家之名稱及地址，使賣家可展開法律訴訟，以收回欠款，或就買家違約申索損害賠償，及申索法律費用。蘇富比在向賣家透露該等資料前，將採取合理步驟通知買家。

9. 未領取購置品

(a) 倘買家支付買入價及買家之費用，但未於拍賣會後三十天內領取已購買之拍賣品，拍賣品將收藏於蘇富比或其他第三方，費用(及風險)由買家承擔。

(b) 倘已支付所購拍賣品之費用，但未於拍賣會後六個月內領取該拍賣品，則買家授權蘇富比(在通知買家後)安排以拍賣或私人出售重售該物品，而預測價格及底價將由蘇富比酌情決定。除非買家在該拍賣會後兩年內收取該出售之所得款項扣除蘇富比產生之所有費用，否則該筆款項將被沒收。

10. 出口及許可證

買家須自行負責識別及領取拍賣品之任何必要之進出口、軍火槍械、瀕臨絕種生物或其他方面之許可證，以及完成任何必要進出口提單、清單或文件。銷售目錄中任何符號或

提示反映蘇富比於編制目錄時所持之合理意見，並僅為競投人提供一般指引而已。在不影響上文規則第3及4條之情況下，蘇富比及賣家概無就任何拍賣品是否受進出口限制或任何禁運作出聲明或保證。不獲發任何許可證或執照並非取消或撤銷銷售合約或任何延遲付款之充分理由。吾等概不會就任何無法完成或遞交所需進出口提單、清單或文件而產生之任何責任負責。

11. 一般資料

(a) 拍賣會之全部影像及其他物料均屬蘇富比版權所有，僅由蘇富比酌情使用。

(b) 給予蘇富比之通知應以書面發出，註明出售之負責部門及銷售圖錄開端指定之參考號碼。給予蘇富比客戶之通知應以彼等正式通知蘇富比之最新地址為收件地址。

(c) 倘因任何理由無法執行該等業務規則之任何條文，則餘下條文應仍然具有十足效力及作用。

(d) 未經蘇富比之事先書面同意前，任何買家不得轉讓該等業務規則，但對買家之繼承人、承付人及遺產執行人具有約束力。蘇富比之行動、遺漏或延遲不應視為豁免或解除其任何權利。

(e) 上文規則第1(a)條所載之資料列明了有關本文主題之整份協議及各方之間就此方面之諒解。各方已協定，除有關其欺詐成分之事實聲明之責任以外，概無訂約方根據該等條款依賴並無明確指明該等資料之任何聲明、保證或承諾而訂立任何合約。

12. 資料保護

因應蘇富比業務管理運作，以及蘇富比公司服務的市場和供應，或根據法律規定，我們可能要求客戶提供私人資料或自第三方取得客戶資料(如信用信息)。如果客戶將法律認定為「敏感」的信息提供予蘇富比，等於同意蘇富比公司可以使用此信息作上述用途。沒有客戶明確同意時，蘇富比公司將不會以任何其他目的使用或處理敏感信息。

如果您欲了解更多蘇富比關於個人資料的政策，或修改您的個人資料，請致電(852) 2524 8121 聯絡我們。

如果您未來不希望收到此類活動詳情，請勾選此處。□

為滿足客戶服務需要，蘇富比可能將資料透露給第三方(如承運人)。一些國家對於個人資料的法律保護與香港不同。蘇富比的政策要求此類第三方尊重客戶資料私隱及機密，並對客戶資料提供與香港法律同等的保護措施，不論承運人是否位於與香港提供同等法律保護個人資料的國家。客戶同意此業務規則，即同意此信息披露。

客戶敬請注意，為安全起見，蘇富比營業場所備有錄影設施。電話如電話及網絡競投、語音信息等也可能被錄音。

13. 法例及司法權

監管法例 該等業務規則及其有關或適用之所有事宜、交易或紛爭之各方面須受香港法例規管並按其詮釋。

司法權 就蘇富比之利益而言，所有競投人及賣家同意香港法院擁有專有司法權，調解所有因與該等業務規則有關或適用之所有事宜或交易之各方面而產生之紛爭。各方均同意蘇富比將保留權利在香港法院以外之任何法院提出訴訟。

送達法律程序文件 所有競投人及賣家不可撤回地同意透過傳真、面送方式、郵寄或香港法例、送達地點之法例或提出訴訟之司法權區之法例允許之其他方式，將有關任何法院訴訟之法律程序文件或任何其他文件送發至買家或賣家知會蘇富比之最新地址或任何其他常用地址。

保證書

本公司對閣下提供之一般保證：

倘蘇富比所出售之物品其後被發現為「贗品」，根據下文之條款，蘇富比將取消該銷售，並將買家就該物品支付予蘇富比之總金額，以原銷售之貨幣退還予買家。

就此而言，根據蘇富比合理之意見，「贗品」指仿製之拍賣品，欺騙作品出處、原產地、日期、產出年數、年期、文化或來源等各方面，而上述各項之正確描述並無收錄於目錄內容(考慮任何專有詞彙)。拍賣品之任何損毀及/或任何類型之復元品及/或修改品(包括重新塗漆或在其上塗漆)，不應視為贗品。

謹請注意，倘發生以下任何一種情況，本保證將不適用：—

- (i) 目錄內容乃根據專家及專家於銷售日期獲普遍接納之意見，或該目錄內容顯示該等意見存在衝突；或
- (ii) 於銷售日期，證明該物品乃贗品之唯一方法，是有關工序並非當時普遍可用或認可、價格極高或用途不切實際；或可能已對拍賣品造成損壞或可能(根據蘇富比合理之意見)已令拍賣品喪失價值之方法；或
- (iii) 倘根據拍賣品之描述，該拍賣品並無重大喪失任何價值。

本保證所規定之年期為有關拍賣日期後五(5)年，純粹提供給買家之獨享利益，且不可轉移至任何第三方。為能依據本保證申索，買家必須：—

- (i) 在收到任何導致買家質疑物品之真偽或屬性之資料後三(3)個月內以書面通知蘇富比，註明拍賣品編號、購買該拍賣品之拍賣日期及被認為是贗品之理由；及
- (ii) 將狀況與銷售予買家當日相同，並能轉移其妥善所有權且自銷售日期後並無出現任何第三方申索之物品退還予蘇富比。

蘇富比可酌情決定豁免上述任何規定。蘇富比可要求買家索取兩名為蘇富比及買家雙方接納之獨立及行內認可專家之報告，費用由買家承擔。蘇富比毋須受買家出示之任何報告所規限，並保留權利尋求額外之專家意見，費用由蘇富比自行承擔。倘蘇富比決定根據本保證取消銷售，蘇富比或會將最多為兩份經雙方審批之獨立專家報告所需之合理費用退還予買家。

GUIDE FOR ABSENTEE BIDDERS

ABSENTEE BIDS

If you are unable to attend an auction in person, and wish to place bids, you may give Sotheby's Bid Department instructions to bid on your behalf. We will then try to purchase the lot or lots of your choice for the lowest price possible, and never for more than the top amount you indicate. This service is free and confidential. Please note: Sotheby's offers this service as a convenience to clients who are unable to attend the sale, and although we will make every effort, Sotheby's will not be responsible for error or failure to execute bids. Absentee bids, when placed by telephone, are accepted only at the caller's risk and must be confirmed by letter, or fax. Fax number for bids only: (852) 2522 1063.

USING THE ABSENTEE BIDS

Please use the absentee bid form provided and be sure to record accurately the lot numbers and descriptions and the top hammer price you are willing to pay for each lot. "Buy" or unlimited bids will not be accepted. Alternative bids can be placed by using the word "OR" between lot numbers. Bids must be placed in the same order as the lot numbers appear in the catalogue.

Each absentee bid form should contain bids for one sale only; the sale number and code name should appear at the top of the form. Please place your bids as early as possible. In the event of identical bids, the earliest received will take precedence. Where appropriate your bids will be rounded down to the nearest amount consistent with the Auctioneer's bidding increments.

SUCCESSFUL BIDS

Successful bidders will receive an invoice detailing their purchases and giving instructions for payment and clearance of goods. Unsuccessful absentee bidders will be advised.

DATA PROTECTION

In connection with the management and operation of our business and the marketing and supply of Sotheby's Companies' services, or as required by law, we may ask clients to provide personal information about themselves or obtain information about clients from third parties (e.g. credit information). Sotheby's Companies will not use or process sensitive information for any other purpose without the client's express consent. In order to fulfil the services clients have requested, Sotheby's may disclose information to third parties (e.g. shippers). Some countries do not offer equivalent legal protection of personal information to that offered within Hong Kong. It is Sotheby's policy to require that any such third parties respect the privacy and confidentiality of our clients' information and provide the same level of protection for clients' information as provided within Hong Kong, whether or not they are located in a country that offers equivalent legal protection of personal information. By signing this Absentee Bid Form you agree to such disclosure.

給缺席競投人指引

缺席競投

閣下如未能親身出席拍賣會但欲作出競投，可向蘇富比之競投部發出指示，由其代表閣下競投。本公司將設法以最低價格購買閣下所選拍賣品，永不超出閣下所指示之最高價格。此為保密之免費服務。請注意，蘇富比為方便未能出席拍賣會之客戶而提供此服務，雖然蘇富比將盡其所能，但不會為執行競投指示之錯誤或未能執行競投指示負責。電話競投之風險須由致電方承擔，並須以函件或傳真確認。競投傳真專線號碼為 (852) 2522 1063。

使用缺席競投

請使用所提供之缺席競投表，並確保準確填寫拍賣品編號及描述，以及閣下願意就每件拍賣品支付之最高成交價。「購買」或無限價競投將不獲接納。可於拍賣品編號之間以「或」字作兩者中擇一競投。競投須根據圖錄內所示拍賣品編號之相同次序作出。

每份缺席競投表應僅供填寫一個拍賣會內之拍賣品的競投價；拍賣編號及代號名稱應填於表格上方。請盡早作出競投。倘出現相同競投價，則最先收到之競投享有優先權。如適當時，閣下之競投價將會被大概調整至最接近拍賣官遞增之競投金額。

成功競投

成功競投人將收到發票，上面載有其購買品之資料及付款及交收貨品之指示。未能成功競投之缺席競投人將收到通知。

資料保障

基於蘇富比公司之管理、經營業務、市場推廣與服務，或因法律規定之需要，蘇富比可能向客戶要求提供其個人資料或向第三方索取有關資料，如信貸資料等。蘇富比公司在未獲得客戶明確同意前將不會將該等敏感性資料作其他用途。為履行客戶所要求之服務，蘇富比有可能向第三方，如付運人披露資料。部份國家不會提供與香港相同之個人資料法律保障。根據蘇富比之公司政策，將要求該第三方尊重客戶之私隱，將客戶資料保密並提供與香港相同程度之個人資料保障，不論他們所處國家能否提供對個人資料之相同法律保障。閣下簽署本缺席競投表，即同意有關披露。

(本中文譯本僅供參考之用，中文譯本如與英文原本有任何抵觸，將以英文原本為準。)

Photography

Repro

BORN Group

Print

Artron Art Group

SHIPPING INSTRUCTIONS

SHIPPING INFORMATION

Please complete this form and we shall arrange for the despatch of all your purchases through one of our nominated shipping agents, at your expense. For advice on shipping your purchases please call Sotheby's Shipping department on (852) 2822 5507 or email hkgshipping@sothebys.com

Sale Details

Sale # Lot # Account #

Please complete this section and delete where applicable

Delivery Address

Telephone

Email

Invoice Address *if different from above*

Telephone

Fax

Special instructions:

Signed

Date

ABSENTEE/TELEPHONE BIDDING FORM

FORMS SHOULD BE COMPLETED IN INK AND EMAILED, MAILED OR FAXED TO THE BIDS DEPARTMENT AT THE DETAILS BELOW

Sale Number HK0775 | **Sale Title** AN ASIAN COLLECTION OF JADE CARVINGS | **Sale Date** 30 NOVEMBER 2017

*TITLE OR COMPANY NAME IF APPLICABLE	*FIRST NAME	*LAST NAME
SOTHEBY'S CLIENT ACCOUNT NO. (IF KNOWN)		
*ADDRESS		
POSTCODE		
*TELEPHONE (HOME)	(BUSINESS)	MOBILE NO
*EMAIL		FAX

PLEASE INDICATE HOW YOU WOULD LIKE TO RECEIVE YOUR SALE CORRESPONDENCE (PLEASE TICK ONE ONLY): EMAIL POST/MAIL

PLEASE TICK IF THIS IS A NEW ADDRESS & GIVE PREVIOUS FULL POSTCODE: _____

PLEASE WRITE CLEARLY AND PLACE YOUR BIDS AS EARLY AS POSSIBLE, AS IN THE EVENT OF IDENTICAL BIDS, THE EARLIEST BID RECEIVED WILL TAKE PRECEDENCE. BIDS SHOULD BE SUBMITTED IN HONG KONG DOLLAR AT LEAST 24 HOURS BEFORE THE AUCTION.

IMPORTANT

Please note that the execution of written and telephone bids is offered as an additional service for no extra charge, and at the bidder's risk. It is undertaken subject to Sotheby's other commitments at the time of the auction. Sotheby's therefore cannot accept liability for failure to place such bids, whether through negligence or otherwise.

Please note that we may contact new clients to request a bank reference.

Sotheby's will require sight of government issued ID and proof of address prior to collection of purchases (do not send originals).

The contract between the buyer and the seller is concluded on the striking of the auctioneer's hammer, and payment of the purchase price for any lot and any buyer's expenses is due immediately in Hong Kong Dollars on the conclusion of the auction.

FOR WRITTEN/FIXED BIDS

- Bids will be executed for the lowest price as is permitted by other bids or reserves.
- "Buy" or unlimited bids will not be accepted and we do not accept "plus one" bids. Please place bids in the same order as in the catalogue.
- Alternative bids can be placed by using the word "or" between lot numbers.
- Where appropriate your written bids will be rounded down to the nearest amount consistent with the auctioneer's bidding increments.

FOR TELEPHONE BIDS

- Please clearly specify the telephone number on which you may be reached at the time of the sale, including the country code. We will call you from the saleroom shortly before your lot is offered.

LOT NUMBER	LOT DESCRIPTION	MAXIMUM HONG KONG DOLLAR PRICE (EXCLUDING PREMIUM) OR TICK FOR PHONE BID
		HK\$
		HK\$
		HK\$
		HK\$
		HK\$
		HK\$
		HK\$
		HK\$

IMPORTANT NOTICE – PREMIUM LOT (🔒)

In order to bid on "Premium Lots" (🔒) you must complete the required pre-registration application and deliver to Sotheby's such necessary financial references, guarantees, deposits and/or such other security as Sotheby's may in its absolute discretion require for your bid. Sotheby's decision whether to accept any pre-registration application shall be final. We recommend you complete and return the pre-registration form in this catalogue in the manner required therein or contact Sotheby's at least 3 working days prior to the relevant sale in order to process the pre-registration. Please bear in mind that we are unable to obtain financial references over weekends or public holidays. If all lots in the catalogue are "Premium Lots", a Special Notice will be included to this effect and the paddle symbol will not be used. The BID^{max} online bidding service is not available for premium lots.

TELEPHONE NUMBER DURING THE SALE (TEL. BIDS ONLY) _____

I agree to be bound by Sotheby's "Conditions of Business for Buyers" and the information set out in the Guide for Prospective Buyers and the Guide for Absentee Bidders, which is published in the catalogue for the sale. I consent to the use of this information and any other information obtained by Sotheby's in accordance with the Guide for Prospective Buyers, the Guide for Absentee Bidders, and Conditions of Business for Buyers.

Please note that it is mandatory for you to provide personal data marked with asterisks (*). In the event you do not provide such personal data, we may not be able to provide you with our products.

We may not so use your personal data unless we have received your consent. By signing this form you agree to our use of the Data as set out in clause 12 "Data Protection" of the Conditions of Business for Buyers. If not, please the box below before signing this form.

I object to the use of my personal data by Sotheby's Companies and its business partners for direct marketing (eg: promotional materials, event invitations and catalogues).

SIGNED _____ DATED _____

ARRANGING PAYMENT

Payment is due in HK dollars immediately after the sale and may be made the following methods: Cash, Banker's Draft, Traveler's Cheque, Cheque, Wire Transfer and Credit card (American Express, MasterCard, Union Pay and Visa).

It is against Sotheby's general policy to accept single or multiple related payments in the form of cash or cash equivalents in excess of the local currency equivalent of US\$10,000.

It is Sotheby's policy to request any purchaser preferring to make a cash payment to provide: proof of identity (by providing some form of government issued identification with a photograph, such as a passport, identity card or driver's license) and confirmation of permanent address. We reserve the right to seek identification of the source of funds received. Thank you for your cooperation.

If you wish to pay for any purchase with your American Express, MasterCard, Union Pay or Visa, you must present the card in person to Sotheby's Hong Kong.

競投出價表

表格應以墨水筆填寫，並電郵、郵寄或傳真至蘇富比競投部，聯絡方式如下

拍賣代號 HK0775 | 拍賣名稱 清瑣致趣 不知書齋收藏玉器精品 | 拍賣日期 2017年11月30日

* 稱謂 (如先生, 女士) 或公司名稱 (如適用)

* 姓

* 名

蘇富比賬號

* 地址

郵編

* 住宅電話

公司電話

手機號碼

* 電子郵件

傳真號碼

請註明您希望以何種方式收到拍賣會相關文件 (請選擇其中一個):

電郵

郵寄

如上述為新地址, 請在方格內 (並提供舊有郵編以核對)

重要事項

請注意書面及電話競投是免費提供之附加服務, 風險由競投人承擔, 而該等服務會在蘇富比於拍賣時其他承諾之限下進行; 因此, 無論是由於疏忽或其他原因引致, 蘇富比毋須就未能作出該競投承擔責任。

請注意蘇富比或會向新客戶索取銀行證明。

新客戶須向蘇富比提供政府發出附有閣下照片之證明文件及住址證明 (請勿郵寄原件)。

買家及賣家之合約於拍賣官擊槌時訂立, 而閣下作為買家必須於拍賣會結束後立即以港元支付拍賣品之買入價及任何買家之費用。

書面競投

- 競投將以最盡可能低之價格進行。
- “購買”或無限價競投標將不獲接納, 及我們不接受“加一口價”競投標。請根據圖錄內之指示投標。

- 可於拍賣編號之間以“或”字兩者 (或若干) 中擇一競投。

- 如適當時, 閣下之書面競投價將會被大概調整至最接近拍賣官遞增之競投金額。

電話競投

- 請清楚註明於拍賣期間可聯絡閣下之電話號碼, 包括國家號碼。我們會於閣下之拍賣品競投前致電給閣下。

拍賣品編號	名稱	最高競投價 (港元) (佣金不計在內) 或以 <input checked="" type="checkbox"/> 代表電話競投
		HK\$
		HK\$
		HK\$
		HK\$
		HK\$
		HK\$
		HK\$
		HK\$

重要通告 — 估價拍賣品 (📄)

為對「高估價拍賣品」(📄) 作出競投, 閣下必須填妥拍賣品預先登記申請表, 並向蘇富比交付所需的財政狀況證明、擔保、存款證明及/或蘇富比可絕對酌情要求閣下為競投須作出的其他抵押。蘇富比對是否接受任何預先登記申請有最終決定權。

本公司建議閣下按照本圖錄內的拍賣品預先登記申請表中指示填妥及交回表格, 或在有關出售日期至少三個工作天前聯絡蘇富比以進行預先登記。請注意本公司不能在週末或公眾假期期間取得財政狀況證明。若在同一圖錄中之所有拍賣品均為高估價拍賣品, 則會就此作出特別提示而不會使用此符號。

網上競投服務並不適用於高估價拍賣品。

拍賣期間之聯絡電話 (只限電話競投)

本人同意接受蘇富比拍賣圖冊內列明之買家業務規則、給準買家之指引及給缺席競投人指引。本人同意蘇富比使用本人資料及根據給準買家之指引、給缺席競投人指引與買家業務規則而取得之其他資料。

請閣下務必在注有 (*) 的欄目內填寫個人資料, 否則我們可能無法為您提供產品及服務。

除非得到閣下同意, 我們不會使用閣下的個人資料。如閣下在本表格的末端簽署, 即表明同意我們依據敝公司業務規則第十二條「資料保障」使用閣下的個人資料作直接促銷。若反對我們使用閣下的個人資料為此用途, 請在方格內 以表示反對

本人反對蘇富比公司及其業務合作夥伴使用本人資料作直接促銷 (如宣傳資料、活動請柬及圖錄)。

簽署

日期

付款方式

拍賣後須即時以下列方法以港元付款: 現金、銀行匯票、旅行支票、支票、電匯、信用咭 (美國運通、萬事達、銀聯或維薩卡)。

蘇富比不會接納逾一萬美元 (或相等貨幣) 之現金款項。應蘇富比業務規則, 本公司有權向支付現金的賣家索取: 身份證明文件 (政府發出附有照片之身份證明文件, 如護照、身份證或駕駛執照) 及通訊地址證明。我們保留查驗所收到款項來源的權利。感謝閣下的合作。

若以信用咭 (美國運通、萬事達、銀聯或維薩卡) 結賬, 請親攜咭到本公司付款。

(以英文本為準)

PREMIUM LOT PRE-REGISTRATION APPLICATION FORM
高估價拍賣品預先登記申請表

SALE # 拍賣編號 HK _____

LOT # 拍賣品編號 _____

*First Name 名

*Last Name 姓

Client Account # 蘇富比賬戶號碼

*Address 通訊地址

*City 城市 Country 國家

*Telephone 電話

Fax 傳真

*Email Address 電子郵件

Client I.D./Passport 身份證或護照編號

Please attach a copy of your ID Card/Passport for identification purpose
請附上身份證或護照影印本以作核對用途

Have you registered to bid at Sotheby's before? Yes No

閣下曾否於蘇富比登記投標? 有 沒有

If you plan to attend the sale and bid on a lot, please fill out this form and fax it to (852) 2810 6238 or mail to the following address in either case to reach Sotheby's no later than 3 working days prior to the day of sale:

Sotheby's Hong Kong Limited
5th Floor, One Pacific Place
88 Queensway, Hong Kong
Tel: (852) 2822 8142
Fax: (852) 2810 6238

如閣下計劃出席是次拍賣並投標拍賣品，請填妥以下表格及於拍賣日前3個工作天傳真至
(852) 2810 6238 或郵寄到：

香港蘇富比有限公司
香港金鐘道88號
太古廣場一期5樓
電話：(852) 2822 8142
傳真：(852) 2810 6238

The contract between the buyer and the seller is concluded on the striking of the auctioneer's hammer, and payment of the purchase price for any lot and any buyer's expenses is due immediately in Hong Kong Dollars on the conclusion of the auction.

買家及賣家之合約於拍賣官擊槌時訂立，而閣下作為買家必須於拍賣會結束後立即以港元支付拍賣品之買入價及任何買家之費用。

I hereby confirm my intention and application to bid on the above lot. I agree to deliver to Sotheby's such necessary financial references, guarantees, deposits and/or such other security as Sotheby's may in its absolute discretion require as security for my bid. Please refer to the "Guide for Prospective Buyers" and "Important Notices to Buyers" for details of the requirement. I agree that Sotheby's has no obligation to accept this pre-registration application and that Sotheby's decision in this regard shall be final. I shall not assume Sotheby's acceptance of my pre-registration application unless I have received a written confirmation from Sotheby's to that effect or a bidding paddle.

本人特此確定申請競投拍賣品。本人同意向蘇富比交付所需的財政狀況證明、擔保、存款證明及/或蘇富比可絕對酌情要求本人為競投須作出的其他抵押。有關細則請參閱本圖錄內“給準買家之指引”及“給予買家的重要告示”。本人同意蘇富比並無責任接受此拍賣品預先登記申請表及蘇富比對此有最終決定權。除收到蘇富比之書面通知確定此申請表有效或發給之投標板，本人並不應假設蘇富比已接納此拍賣品預先登記申請表。

Please note that the auctioneer may open the bidding on any lot by placing a bid on behalf of the seller. The auctioneer may further bid on behalf of the seller up to the amount of the reserve, by placing responsive or consecutive bids for a lot.

拍賣官可代表賣家為任何拍賣品叫第一口價以開始競投。拍賣官更可代表賣家以接連投標或競投之方式就拍賣品作出競投直至達到底價。

You authorise Sotheby's to request a financial reference from your bank.

閣下授權蘇富比向銀行索取有關本人之財務資料。

Please note that it is mandatory for you to provide personal data marked with asterisks. In the event you do not provide such personal data, we may not be able to provide you with our products.

We may not so use your personal data unless we have received your consent. By signing this form you agree to our use of the Data as set out in clause 12 "Data Protection" of the Conditions of Business for Buyers. If not, please the box below before signing this form.

I object to the use of my personal data by Sotheby's Companies and its business partners for direct marketing (eg: promotional materials, event invitations and catalogues).

你必須在註明(*)的欄目，提供所需的個人資料。如你未能提供，我們未必可以向你提供我們的產品或服務。

除非得到閣下同意，我們不會使用閣下的個人資料。如閣下在本表格的末端簽署，即表明同意我們依據敝公司業務規則第十二條「資料保障」使用閣下的個人資料作直接促銷。若反對我們使用閣下的個人資料為此用途，請在方格內 以表示反對

本人反對蘇富比公司及其業務合作夥伴使用本人資料作直接促銷(如宣傳資料、活動請柬及圖錄)。

It is against Sotheby's general policy to accept single or multiple related payments in the form of cash or cash equivalents in excess of the local currency equivalent of US\$10,000. It is Sotheby's policy to request any new clients or purchasers preferring to make a cash payment to provide: proof of identity (by providing some form of government issued identification containing a photograph, such as a passport, identity card or driver's licence) and confirmation of permanent address. We reserve the right to seek identification of the source of funds received. Thank you for your cooperation.

蘇富比不會接納逾一萬美元(或相等貨幣)之現金款項。應蘇富比業務規則，本公司有權向支付現金的買家或新顧客索取有效身份證明文件、通訊地址證明及現金來源證明。

The BID^{online} online bidding service is not available for premium lots.

網上競投服務並不適用於高估價拍賣品。

By signing below, I agree to be bound by the Conditions of Business for Buyers and Authenticity Guarantee as printed in the catalogue and the Conditions of Business for Sellers which are available from Sotheby's offices on request. If Sotheby's so requests, I agree to provide proof of identity and permanent address.

本人同意接受圖錄內列明之給買家業務規則及保證書，以及可於蘇富比辦事處索取的給賣家業務規則。應蘇富比要求，本人同意提供有效身份證明文件及通訊地址證明。

SIGNATURE 簽署

NOTES

NOTES

ASIA SPECIALIST DEPARTMENTS

Our specialists are available by email using
firstname.lastname@sothebys.com

HONG KONG

CHINESE WORKS OF ART

Nicolas Chow
Sam Shum
+852 2822 8128

CHINESE PAINTINGS

C.K. Cheung
+852 2822 8132

CONTEMPORARY ART

Evelyn Lin
+852 2822 8134

MODERN ASIAN ART

Vinci Chang
+852 2822 9008

CONTEMPORARY INK ART

Katherine Don
+852 2822 9019

FINE ARTS

Isaure de Viel Castel
+852 2822 8101

MODERN & CONTEMPORARY

SOUTHEAST ASIAN ART

Mok Kim Chuan
+65 6732 8239

JEWELLERY

Quek Chin Yeow
+852 2822 8112
Flora Wong
+852 2822 8114
Shanne Ng
+852 2822 5588
Yvonne Chu
+852 2822 8178
Cristel Tan
+852 2822 8011

WATCHES

Jessie Kang
+852 2822 8109

CLASSICAL CHINESE PAINTINGS

Steven Zuo
+852 2822 9013

WINE

Adam Bilbey
Auction
Michelle Chan
Paul Wong
+852 2822 8174
Kent Law
+852 2822 5595
Retail
Victor Rabot
Vivian Liang
Kamryn Lee
+852 2886 7888

SINGAPORE

JEWELLERY

Esther Seet
+65 6732 8239

TAIWAN

JEWELLERY & WATCHES

Wendy Lin
Nicolette Chou
+886 2 2757 6689

‡ Consultant

ASIAN OFFICES

BEIJING

Rachel Shen
Room 1006, 10th Floor
Raffles City Beijing Office Tower
No. 1 Dongzhimen South Street
Dongcheng District, Beijing
China 100007 P. R. C.
+86 10 6408 8890
FAX +86 10 6408 8820

HONG KONG

Kevin Ching
5th Floor
One Pacific Place
88 Queensway
Hong Kong
+852 2524 8121
FAX +852 2810 6238

SHANGHAI

Rachel Shen
Room 2109, CITIC Square
No. 1168 Nanjing Road West
Shanghai 200041, China
+86 21 6288 7500
FAX +86 21 6288 7200

INDONESIA

Jasmine Prasetyo
The Capital Residence
Ground Floor
Sudirman Central Business
District, Lot 24
Jl. Jend. Sudirman Kav. 52-53
Jakarta 12190, Indonesia
+62 21 5797 3603
FAX +62 21 5797 3604

JAPAN

Ryoichi Hirano
Fuerte Kojimachi Bldg. 3/F
1-7 Kojimachi
Chiyoda-ku 102-0083
Tokyo
+81 3 3230 2755
FAX +81 3 3230 2754

KOREA

c/o Hong Kong Office
+852 2524 8121
FAX +852 2810 6238

MALAYSIA

Walter Cheah ‡
25 Jalan Pudu Lama
50200 Kuala Lumpur
Malaysia
+603 2070 0319

PHILIPPINES

Angela Hsu ‡
c/o Hong Kong Office
+63 9178150075

SINGAPORE

Esther Seet
1 Cuscaden Road
01- 01 The Regent Singapore
Singapore 249715
+65 6732 8239
FAX +65 6737 0295

TAIWAN

Wendy Lin
Suite 1610, 16F, No.333, Sec. 1
Keelung Road, Taipei
Taiwan 110, R.O.C.
+886 02 2757 6689
FAX +886 02 2757 6679

THAILAND

Wannida Saetieo
2nd Floor, Sukhothai Hotel
13/3 South Sathorn Rd
Bangkok 10120, Thailand
+662 286 0788
+662 286 0789
FAX +662 286 0787

BOARD OF DIRECTORS

Domenico De Sole
Chairman of the Board

The Duke of Devonshire
Deputy Chairman of the Board

Tad Smith
**President and
Chief Executive Officer**

Jessica Bibliowicz
Linus W. L. Cheung
Kevin Conroy
Daniel S. Loeb
Olivier Reza
Marsha E. Simms
Diana L. Taylor
Dennis M. Weibling
Harry J. Wilson

**SOTHEBY'S
EXECUTIVE MANAGEMENT**

Jill Bright
**Human Resources
& Administration
Worldwide**

Amy Cappellazzo
**Chairman
Fine Art Division**

Valentino D. Carlotti
**Business Development
Worldwide**

Kevin Ching
**Chief Executive Officer
Asia**

Adam Chinn
**Chief Operating Officer
Worldwide**

Lauren Gioia
**Communications
Worldwide**

David Goodman
**Digital Development
& Marketing
Worldwide**

Mike Goss
Chief Financial Officer

Scott Henry
**Technology & Operations
Worldwide**

Jane Levine
**Chief Compliance Counsel
Worldwide**

Jonathan Olsoff
**General Counsel
Worldwide**

Jan Prasens
**Managing Director
Europe, Middle East, Russia,
India and Africa**

Allan Schwartzman
**Chairman
Fine Art Division**

Maarten ten Holder
**Global Managing Director
Luxury & Lifestyle Division**

**SOTHEBY'S INTERNATIONAL
COUNCIL**

Robin Woodhead
**Chairman
Sotheby's International**

John Marion
Honorary Chairman

Juan Abelló
Judy Hart Angelo
Anna Catharina Astrup
Nicolas Berggruen
Philippe Bertherat
Lavinia Borrromeo
Dr. Alice Y.T. Cheng
Laura M. Cha
Halit Cingilloğlu
Jasper Conran
Henry Cornell
Quinten Dreesmann
Ulla Dreyfus-Best
Jean Marc Etlin
Tania Fares
Comte Serge de Ganay
Ann Getty
Yassmin Ghandehari
Charles de Gunzburg
Ronnie F. Heyman
Shalini Hinduja
Pansy Ho
HH Prince Ayn Al-Hayat Khan
Catherine Lagrange
Edward Lee
Jean-Claude Marian
Batia Ofer
Georg von Opel
Marchesa Laudomia Pucci Castellano
David Ross
Rolf Sachs
René H. Scharf
Biggi Schuler-Voith
Judith Taubman
Olivier Widmaier Picasso
The Hon. Hilary M. Weston,
CM, CVO, OOnt

CHAIRMAN'S OFFICE

AMERICAS

Lisa Dennison
Benjamin Doller
Andrea Fiuczynski
George Wachter
Lulu Creel

EUROPE

Oliver Barker
Helena Newman
Mario Tavella
Dr. Philipp Herzog von Württemberg

David Bennett
Lord Dalmeny
Claudia Dwek
Edward Gibbs
Caroline Lang
Lord Poltimore

ASIA

Patti Wong

Richard C. Buckley
Nicolas Chow
Quek Chin Yeow

Sotheby's | 蘇富比 EST. 1744
Collectors gather here.